

IQuantaPerformanceReports  
DateandTime:16<sup>th</sup>January200712.30pm

<b>Titleofpapers</b> :TwoIQuantaPapers:A)ReportshowingPerformance Improvementsandlatestperformanceagainststargets B)Reportshowingdetailoflatestposition(tobet abled)		
<b>Preparedby:</b> JamieO'Reilly <b>Presentatmeeting:</b> Yes		
<b>Leadingpartner/s:</b> All		
<b>Summaryofcontentandissuesraised:</b> Thisreportdetailsthelatestperformancetrendsinrel ationtoourkey performanceindicatorsfromIQuantaandalsoshowsthesei nthecontextof thepositioneighteenmonthsagoandthetargetswhich areexpireinApril 2008.		
<b>Recommendations:</b>  i) ThattheBoardnotesthereports		
<b>FinancialandHRImplications</b> none		
<b>PromotionofEquality&amp;Diversity</b>		
Purposeofpaper(tick)	Decision	
	Discussion& comment	√
	Information	

## SUMMARY

The iQuanta reports below show the latest performance figures and also set these against a context of the position eighteen months ago and our targets for April 2008.

The primary target is the reduction in the BCS Crime Comparator figure by 17% over three years, ending in April 2008. We are not on course to achieve this target and this has been the case since 2005 when the BCS Comparator crime level rose steadily and steeply for almost a year.

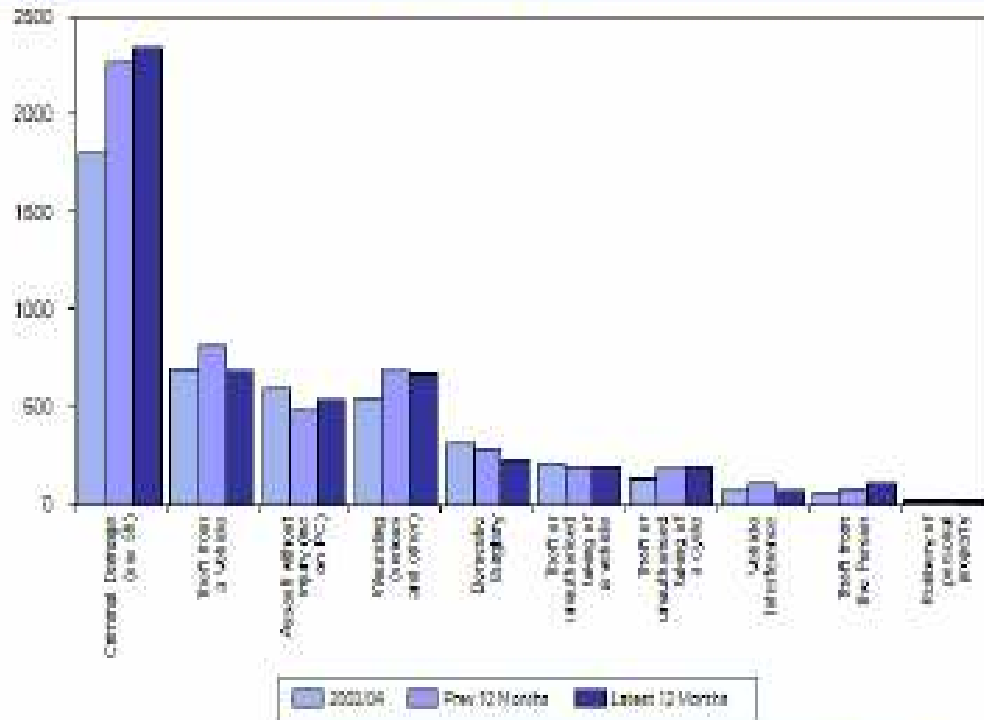
Since around October 2006, this trend has turned around with a very gradual but steady decline in the BCS crime comparator figure – at least until the latest figures were released (which contain crime figures up to 1<sup>st</sup> Dec 2007) which show a disappointing rise in the figure.

This rise appears to be primarily due to an unexpected increase in the levels of criminal damage in the northern part of the Borough, owing primarily to two large spates of activity in Over Wallop and Cricketer's Way. Indeed, there were 22 incidents in just one night in Over Wallop – around 1% of the expected annual criminal damage total for the whole Borough.

This rise was accompanied by a significant, albeit smaller rise in the levels of criminal damage in the south of the Borough.

Having looked at the crime figures which the Partnership analyst has provides to the monthly Joint Action Group meetings (but which have not yet been incorporated into the iQuanta system), we find that levels of criminal damage have reduced significantly since October and now appear to have broadly returned to previous levels. It seems therefore that this sudden rise in criminal damage activity during October 2007, was a 'blip' in the trend rather than the beginning of a longer term change of direction. However, this will of course only be revealed in the fullness of time.

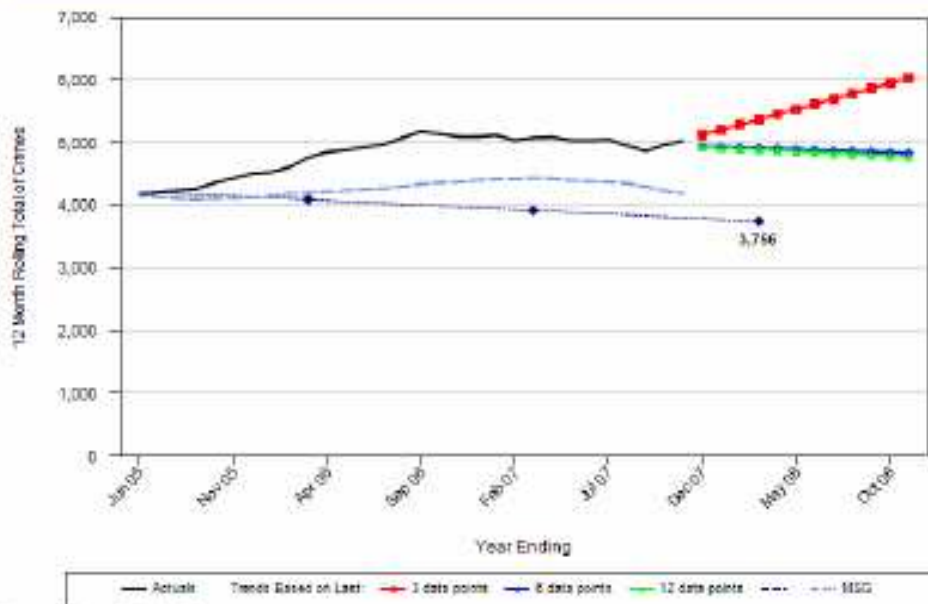
**Progress towards PSA 1 target  
Hampshire - Test Valley CDRP  
Data to end of Nov 07**



	Performance				On Target?
	Baseline 2003/04	Prev 12 months	Latest 12 months	Change from Baseline	
<b>Total comparable crime</b>	<b>4419</b>	<b>5103</b>	<b>5038</b>	<b>Up 14%</b>	<b>X X</b>
Criminal Damage (inc 50)	1768	2202	2304	Up 30%	
Theft from a Vehicle	688	614	664	Down 1%	
Assault without injury (inc on PC)	569	477	539	Down 6%	
Wounding (serious and other)	645	679	666	Up 3%	
Domestic Burglary	311	286	236	Down 24%	
Theft or unauthorised taking of a vehicle	253	196	189	Down 11%	
Theft or unauthorised taking of a cycle	138	179	160	Up 40%	
Vehicle interference	67	108	70	Up 4%	
Theft from the Person	57	78	106	Up 89%	
Robbery of personal property	17	24	20	Up 18%	

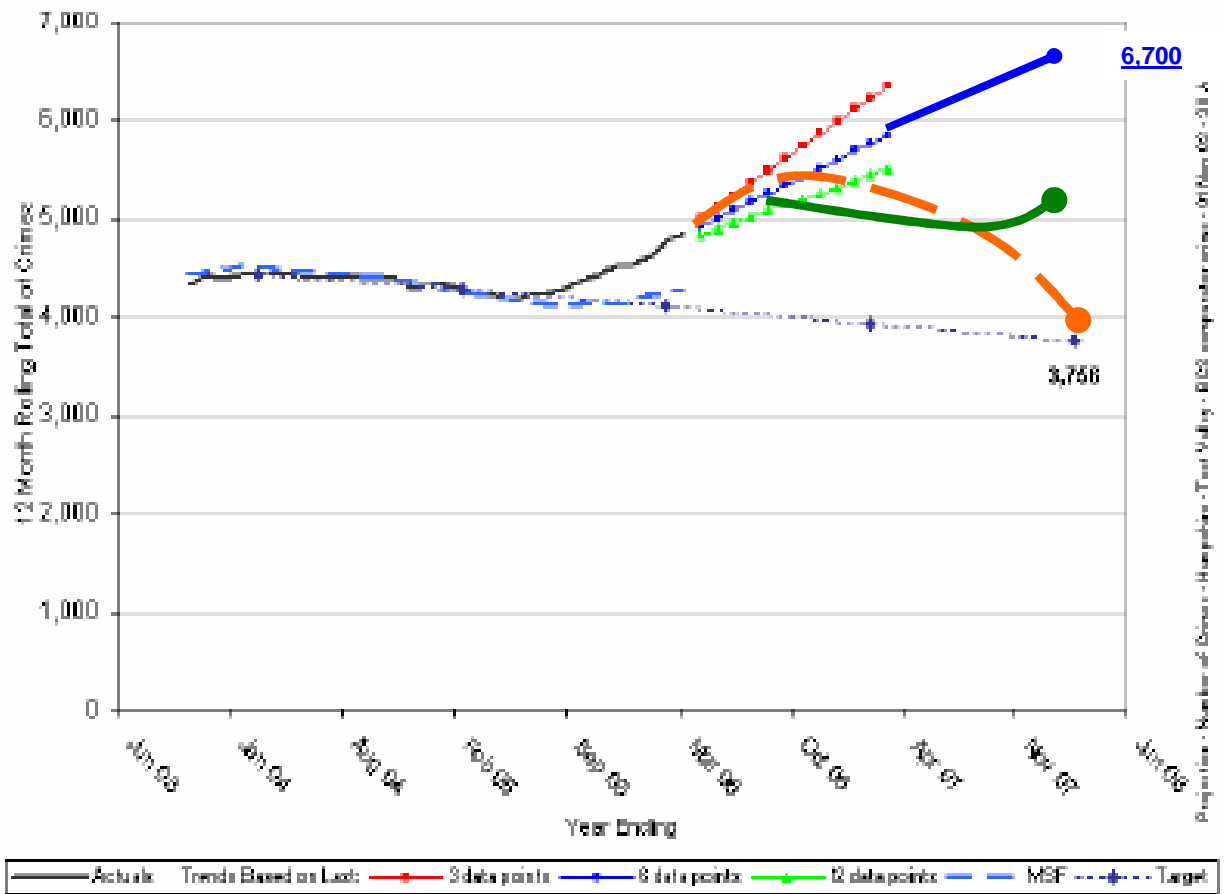
Source: Hqs para 13 Dec 2007

IQuanta Projection - Number of Crimes  
 Hampshire - Test Valley CDRP  
 BCS comparator crime  
 01 Jun 05 - 30 Nov 07



Source: IQuanta 19 Dec 2007

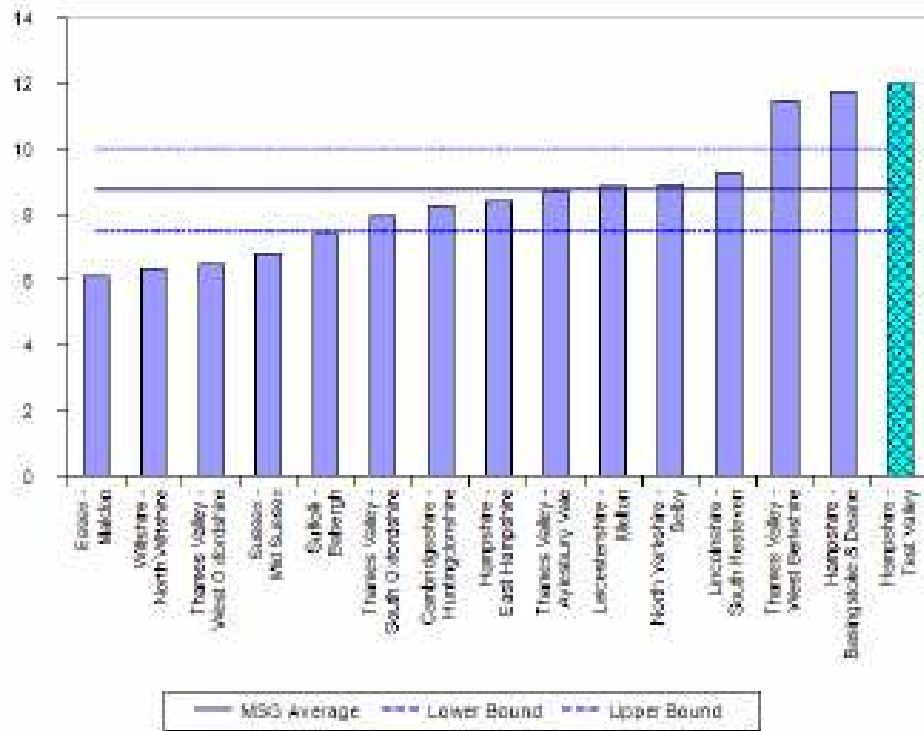
**Projection - Number of Crimes  
Hampshire - Test Valley  
BCS comparator crime  
01 Nov 03 - 30 Apr 06**



**Key**

- =Where we're heading a year and a half ago
- =Where we needed to go (desirable new trajectory)
- =Where we are now heading

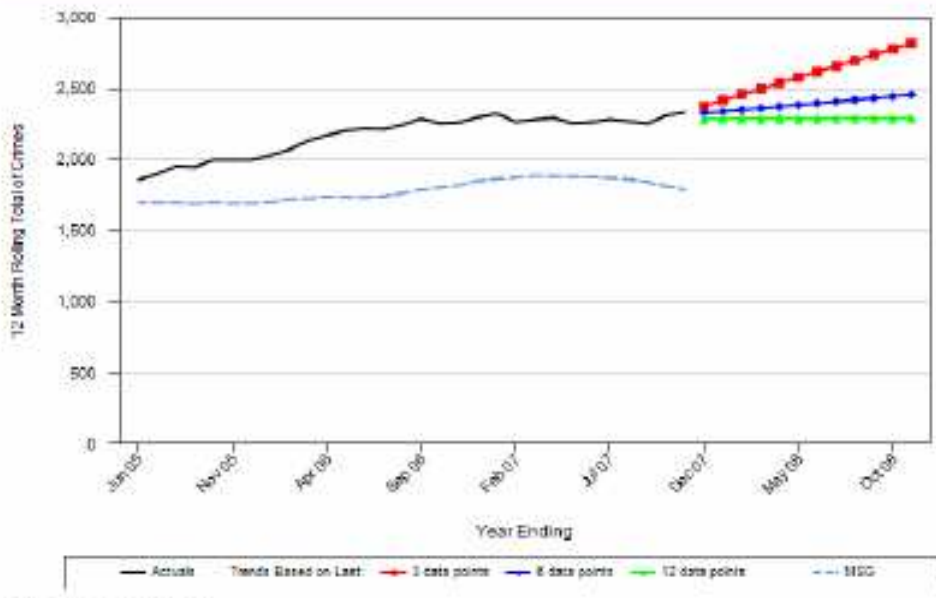
iQuanta Barchart MSG - Crimes per 1000 Residents  
 Hampshire - Test Valley CDRP  
 BCS comparator crime  
 01 Sep 2007 - 30 Nov 2007



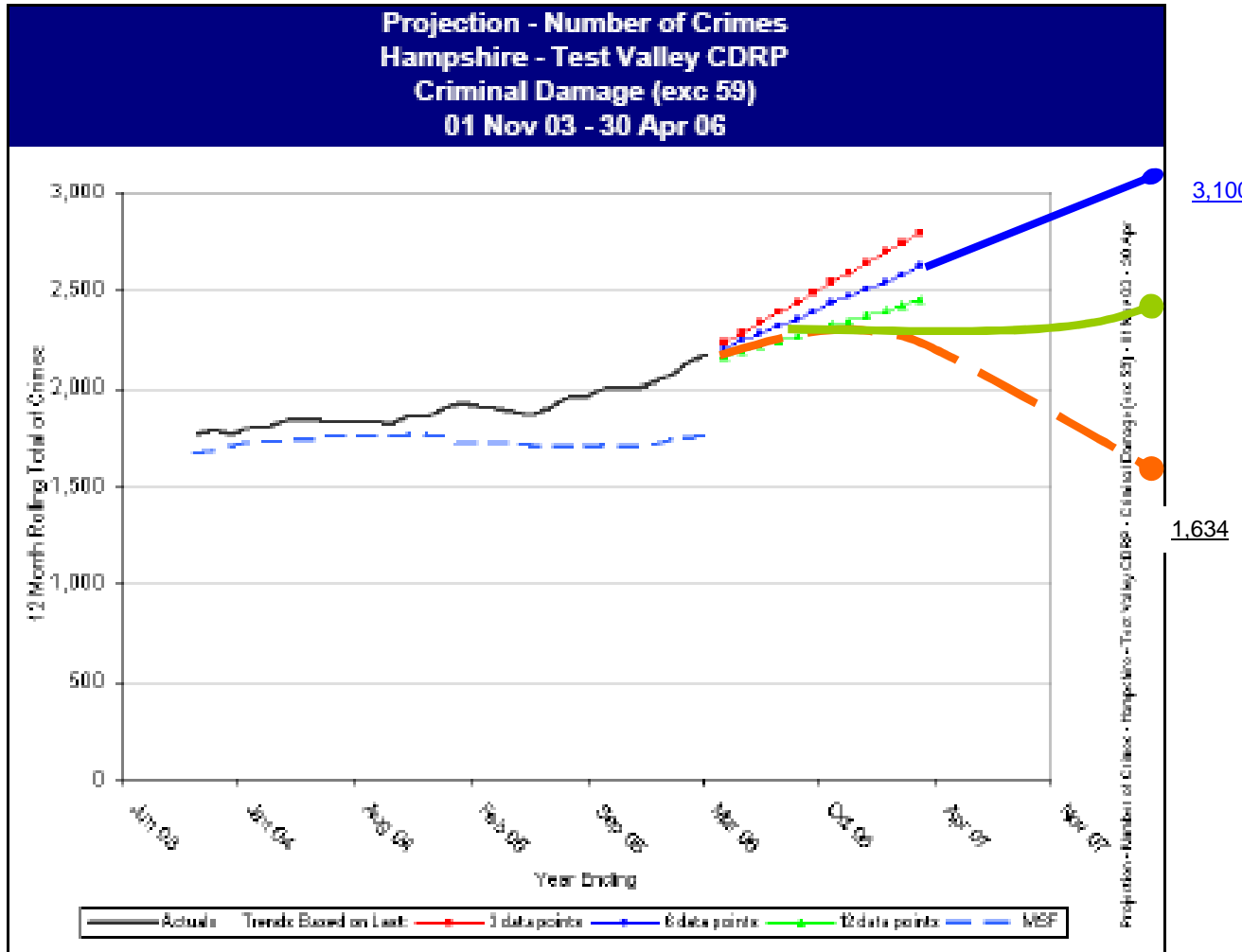
CDRP	Crimes per 1000 Residents
Essex - Maldon	6.110
Wiltshire - North Wiltshire	6.390
Thames Valley - West Oxfordshire	6.457
Sussex - Mid Sussex	6.841
Bedfordshire - Bedford	7.430
Thames Valley - South Oxfordshire	7.951
Cambridgeshire - Huntingdonshire	8.272
Hampshire - East Hampshire	8.403
Thames Valley - Aylesbury Vale	8.685
Leicestershire - Melton	8.871
North Yorkshire - Selby	8.935
Lincolnshire - South Kesteven	9.249
Thames Valley - West Berkshire	11.482
Hampshire - Basingstoke & Deane	11.792
Hampshire - Test Valley	11.969
Hampshire - Test Valley MSG	8.778

Source: iQuanta 13 Dec 2007

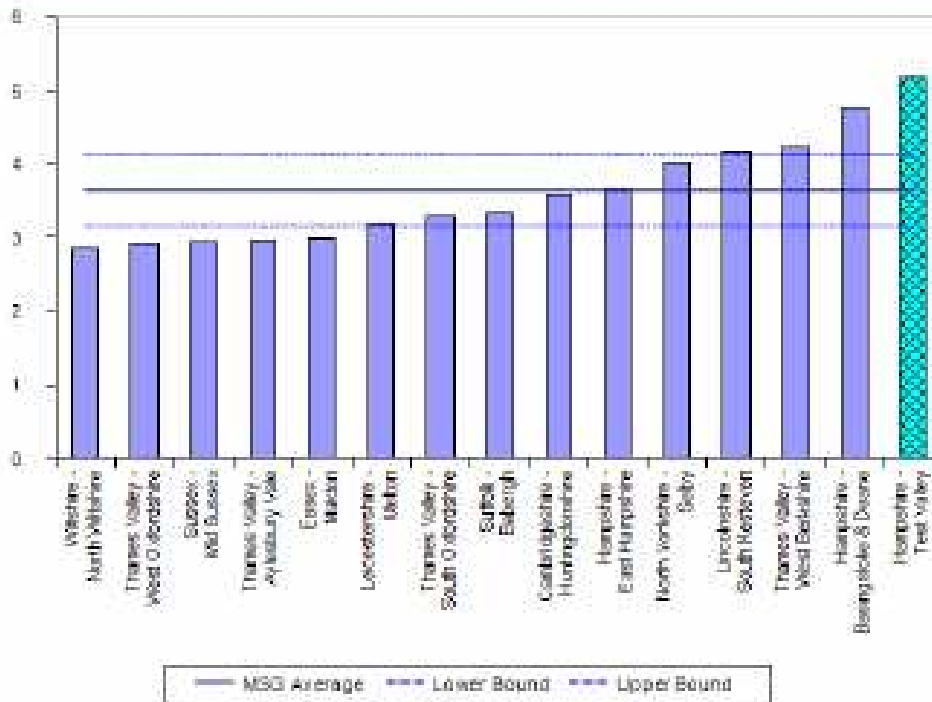
IQuanta Projection - Number of Crimes  
 Hampshire - Test Valley CDRP  
 Criminal Damage (exc 59)  
 01 Jun 05 - 30 Nov 07



Source: IQuanta to Dec 2007

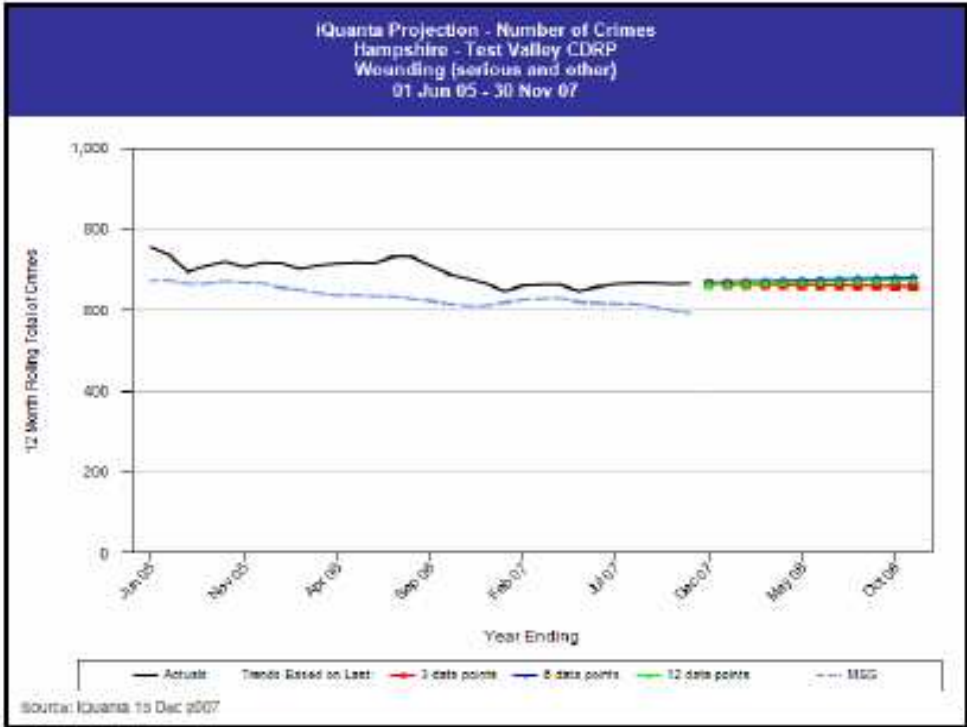
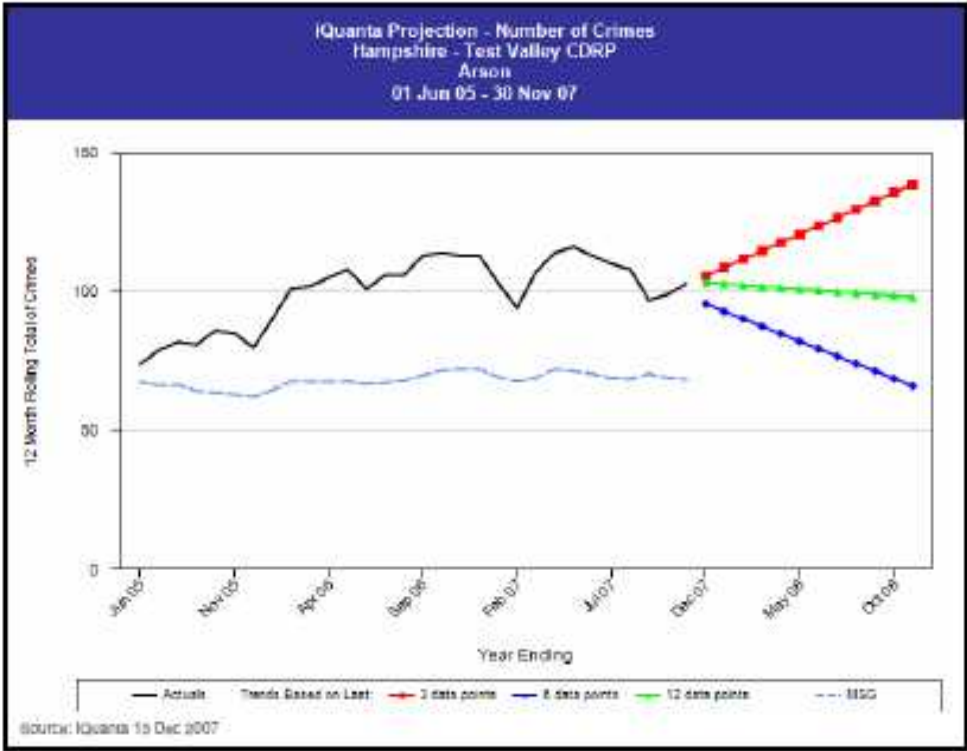


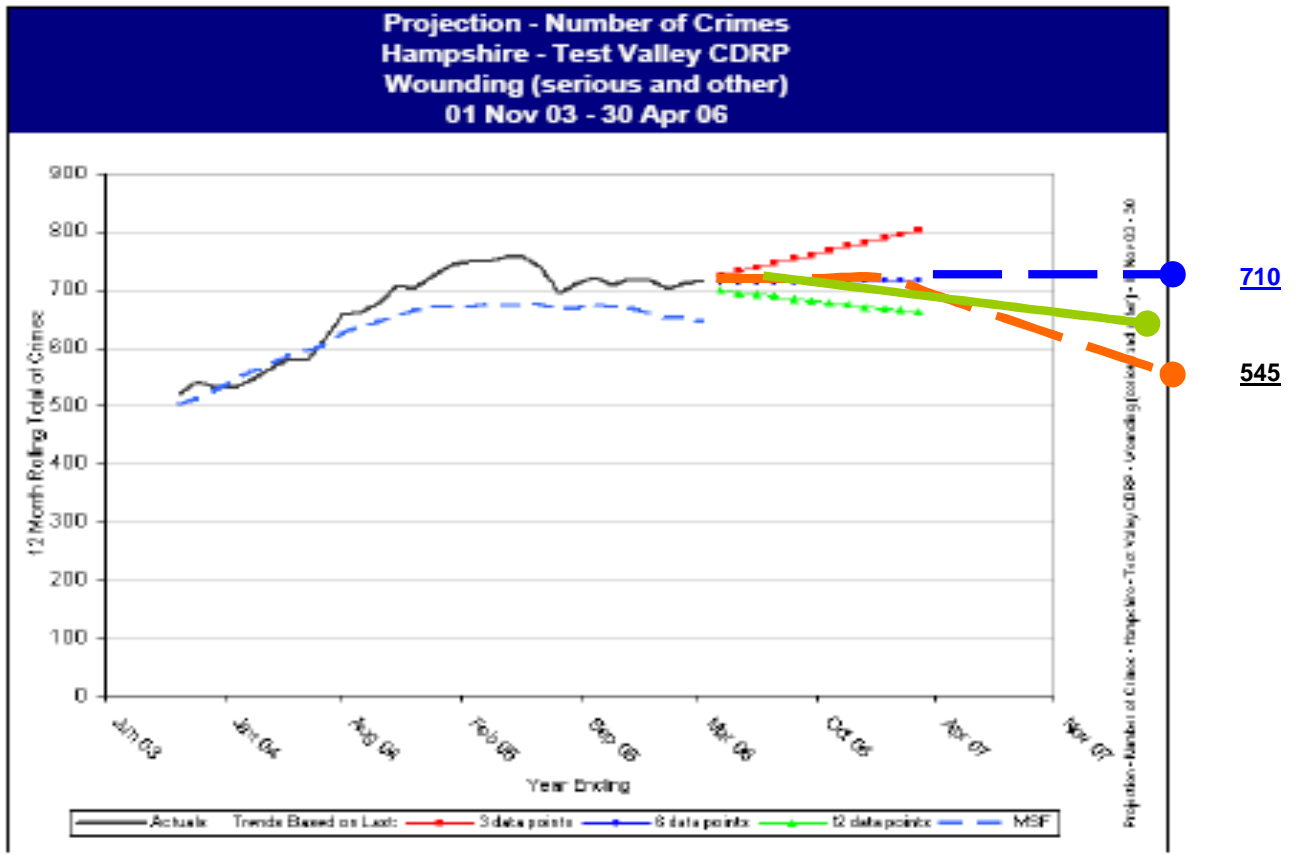
iQuanta Barchart MSG - Crimes per 1000 Residents  
 Hampshire - Test Valley CDRP  
 Criminal Damage (exc 59)  
 01 Sep 2007 - 30 Nov 2007




CDRP	Crimes per 1000 Residents
Wiltshire - North Wiltshire	2.851
Thames Valley - West Oxfordshire	2.914
Sussex - Mid Sussex	2.936
Thames Valley - Aylesbury Vale	2.976
Essex - Maldon	2.982
Leicestershire - Melton	3.008
Thames Valley - South Oxfordshire	3.286
Staffordshire - Stafford	3.323
Cambridgeshire - Huntingdonshire	3.536
Hampshire - East Hampshire	3.670
North Yorkshire - Selby	4.010
Lincolnshire - South Kesteven	4.173
Thames Valley - West Berkshire	4.235
Hampshire - Basingstoke & Deane	4.771
<b>Hampshire - Test Valley</b>	<b>5.188</b>
<b>Hampshire - Test Valley MSG</b>	<b>3.853</b>


Source: iQuanta 1a Dec 2007






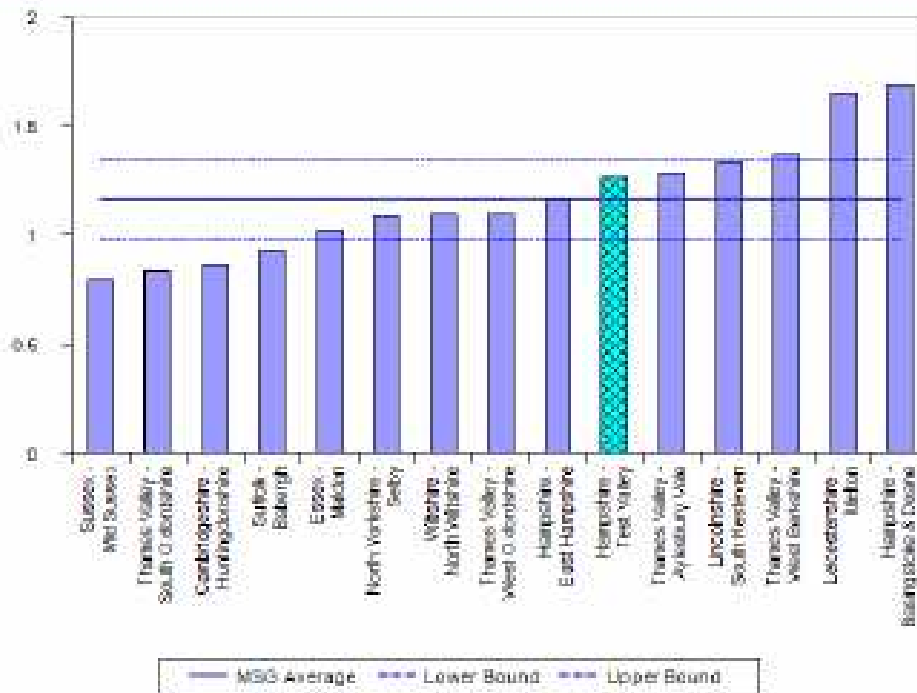
**Key**

 =Where we were heading

 =Where we wanted to go

 =Where we are going

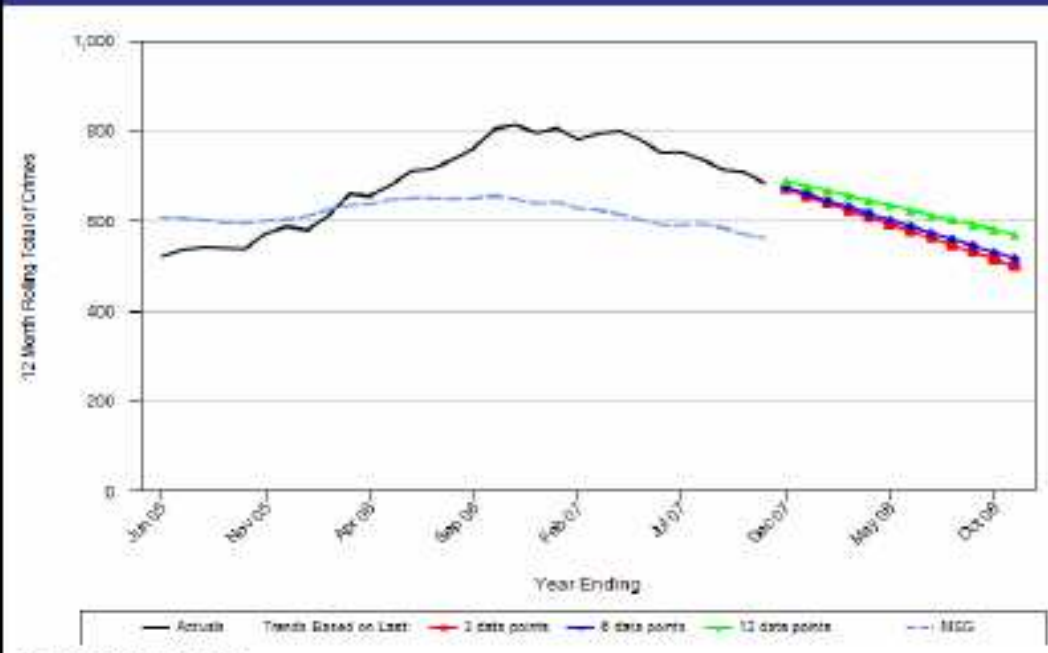
iQuanta Barchart MSG - Crimes per 1000 Residents  
 Hampshire - Test Valley CORP  
 Wounding (serious and other)  
 01 Sep 2007 - 30 Nov 2007



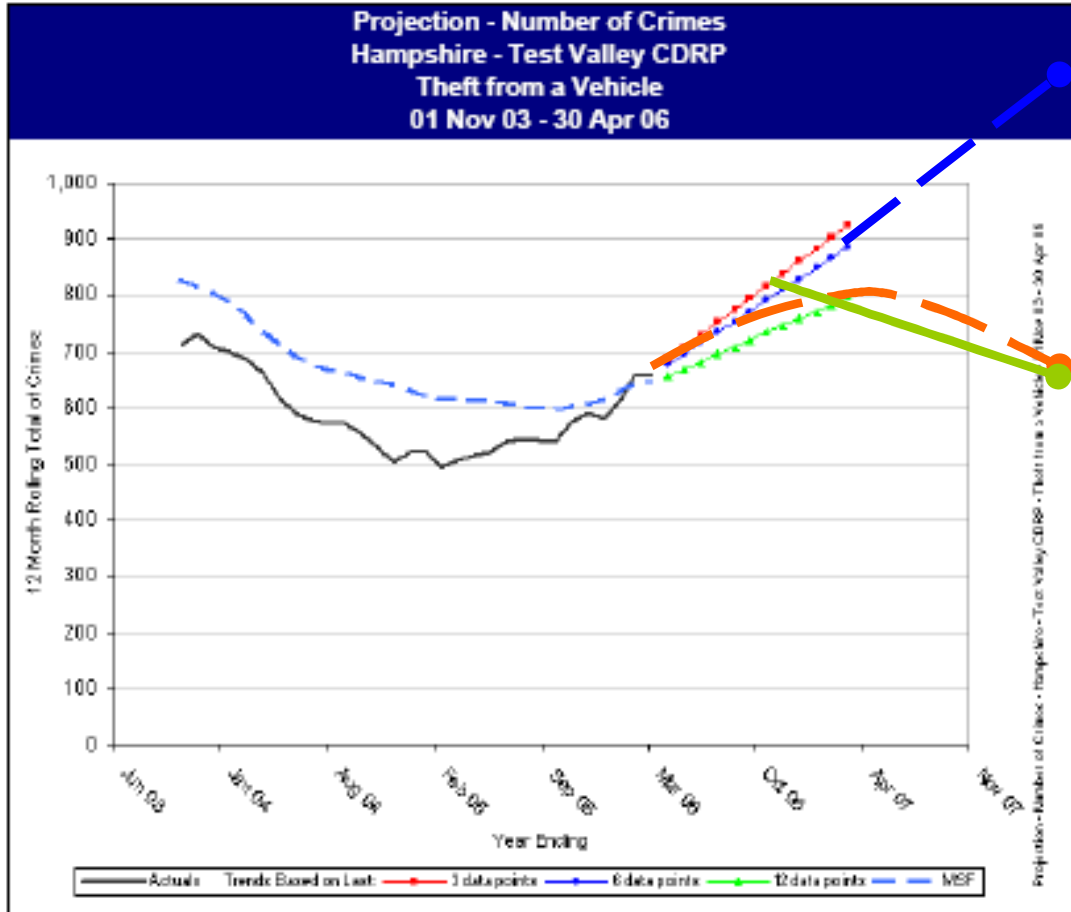
CORP	Crimes per 1000 Residents
Sussex - Mid Sussex	0.798
Thames Valley - South Oxfordshire	0.895
Cambridgeshire - Huntingdonshire	0.864
Suffolk - Babergh	0.934
Essex - Maldon	1.021
North Yorkshire - Selby	1.090
Wiltshire - North Wiltshire	1.097
Thames Valley - West Oxfordshire	1.098
Hampshire - East Hampshire	1.163
Hampshire - Test Valley	1.187
Thames Valley - Aylesbury Vale	1.290
Lincolnshire - South Kesteven	1.338
Thames Valley - West Berkshire	1.371
Leicestershire - Melton	1.656
Hampshire - Basingstoke & Deane	1.655
Hampshire - Test Valley MSG	1.187

Source: iQuanta 13 Dec 2007

**IQanta Projection - Number of Crimes**  
**Hampshire - Test Valley CDRP**  
**Theft from a Vehicle**  
**01 Jun 05 - 30 Nov 07**



Source: IQanta 13 Dec 2007



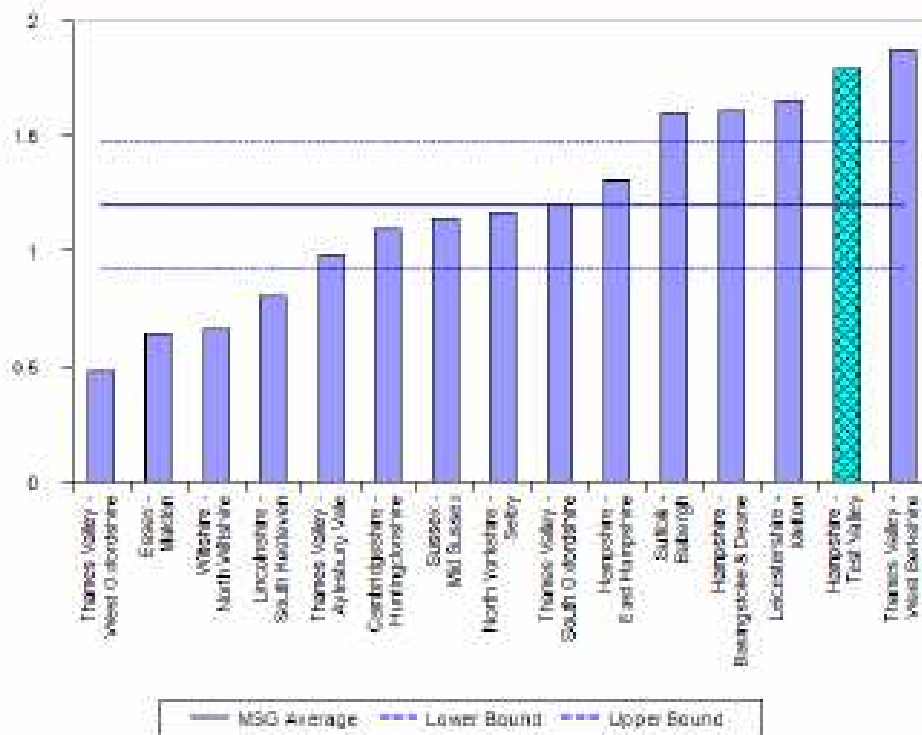
**Key**

=Whereewereheading

=Whereewantedtogo

=Wherewearegoing

iQuanta Barchart MSG - Crimes per 1000 Residents  
 Hampshire - Test Valley CDRP  
 Theft from a Vehicle  
 01 Sep 2007 - 30 Nov 2007



CDRP	Crimes per 1000 Residents
Thames Valley - West Oxfordshire	0.479
Essex - Maldon	0.648
Wiltshire - North Wiltshire	0.667
Lincolnshire - South Kesteven	0.807
Thames Valley - Aylesbury Vale	0.988
Cambridgeshire - Huntingdonshire	1.093
Sussex - Mid Sussex	1.147
North Yorkshire - Selby	1.163
Thames Valley - South Oxfordshire	1.210
Hampshire - East Hampshire	1.308
Buffolk - Babergh	1.604
Hampshire - Basingstoke & Deane	1.607
Leicestershire - Melton	1.656
Hampshire - Test Valley	1.788
Thames Valley - West Berkshire	1.875
Hampshire - Test Valley MSG	1.208

Source: iQuanta 13 Dec 2007

