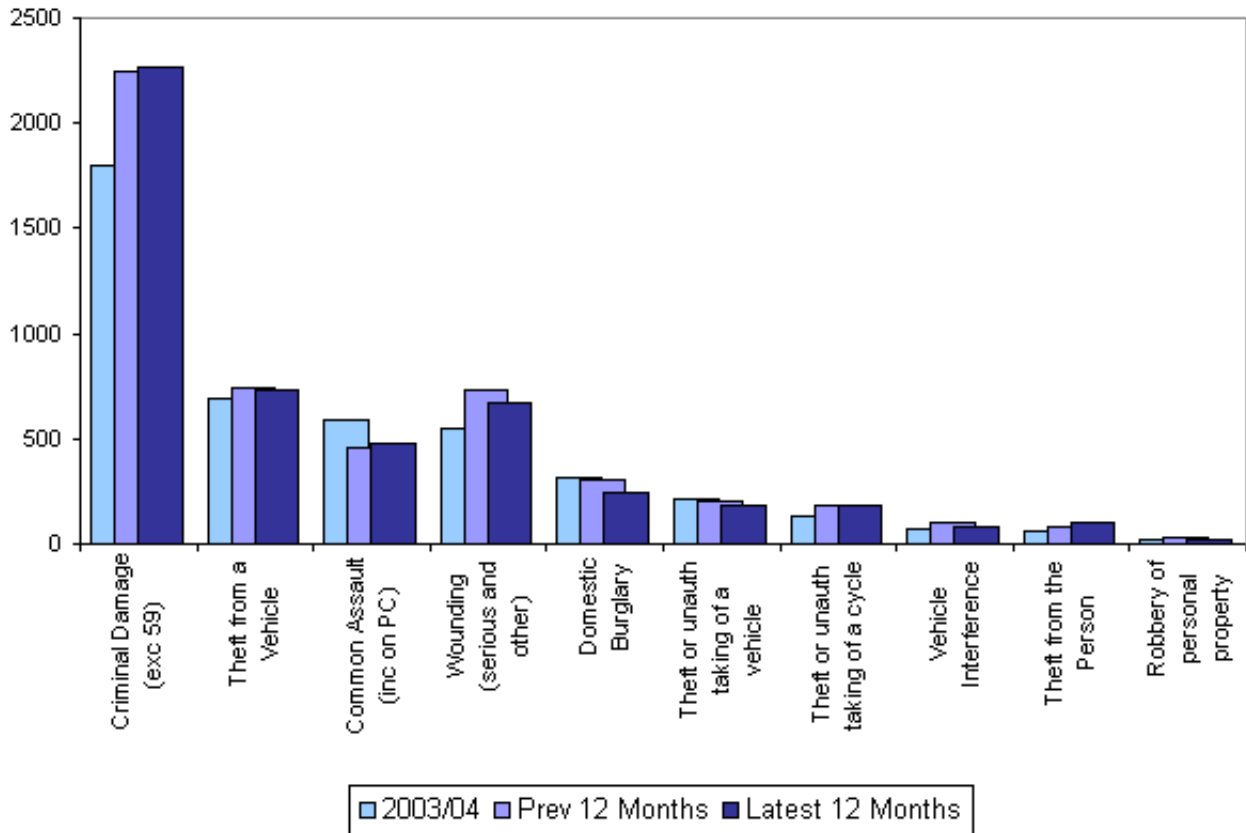


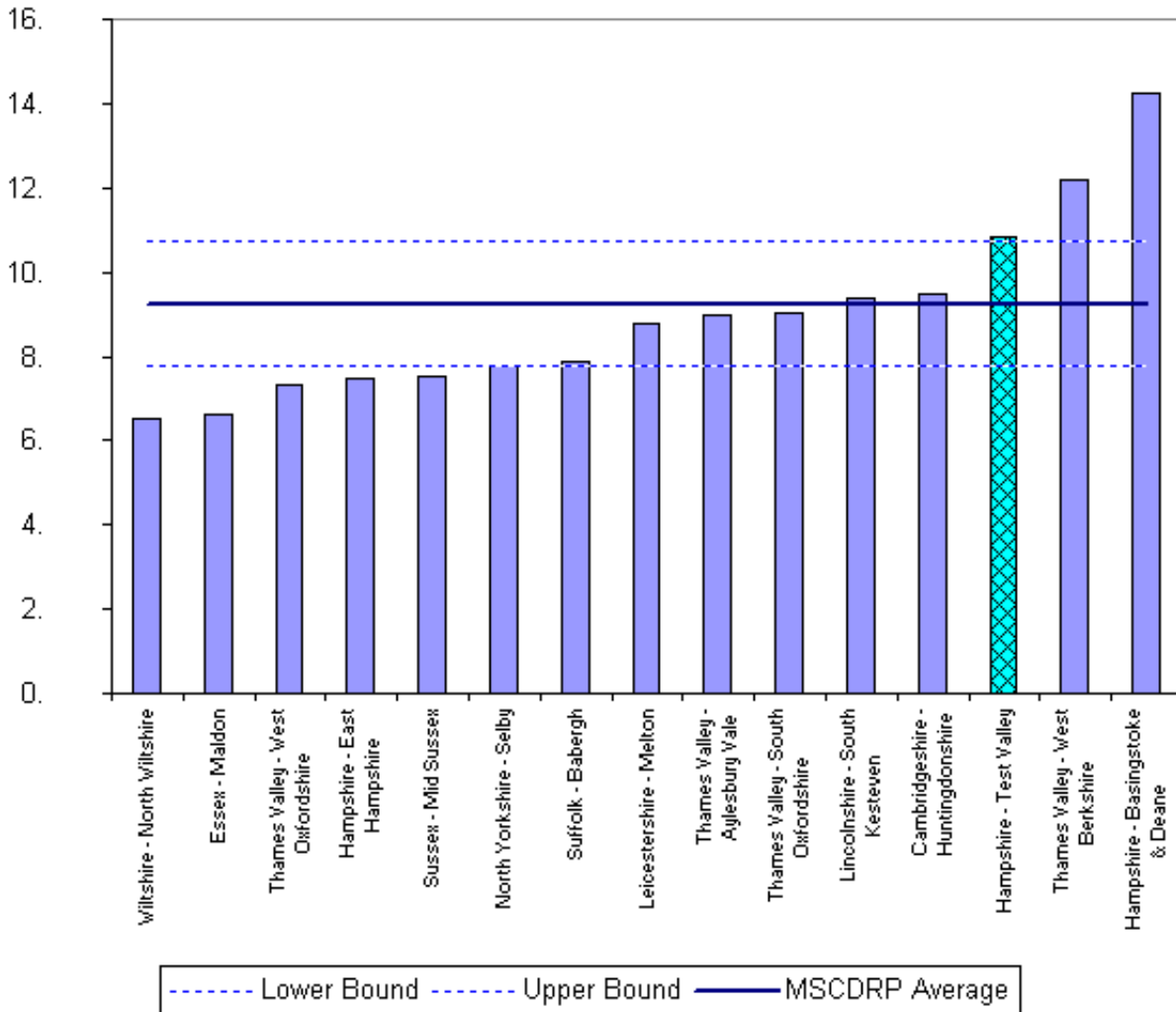
Progress towards PSA 1 target Hampshire - Test Valley CDRP Data to the end of Aug 07



Progress towards PSA 1 target - Hampshire - Test Valley CDRP - Data to the end of Aug 07

	Performance				On target?	2007/08 Target
	Baseline 2003/04	Prev 12 months	Latest 12 months	Change from Baseline		
BCS comparator crime	4419	5081	4957	Up 12%	× ×	3,756
Criminal Damage (exc 59)	1796	2245	2271	Up 26%		
Theft from a Vehicle	688	737	736	Up 7%		
Common Assault (inc on PC)	589	461	476	Down 19%		
Wounding (serious and other)	545	733	667	Up 22%		
Domestic Burglary	311	305	245	Down 21%		
Theft or unauth taking of a vehicle	213	205	181	Down 15%		
Theft or unauth taking of a cycle	136	186	185	Up 36%		
Vehicle Interference	67	100	77	Up 15%		
Theft from the Person	57	83	98	Up 72%		
Robbery of personal property	17	26	21	Up 24%		

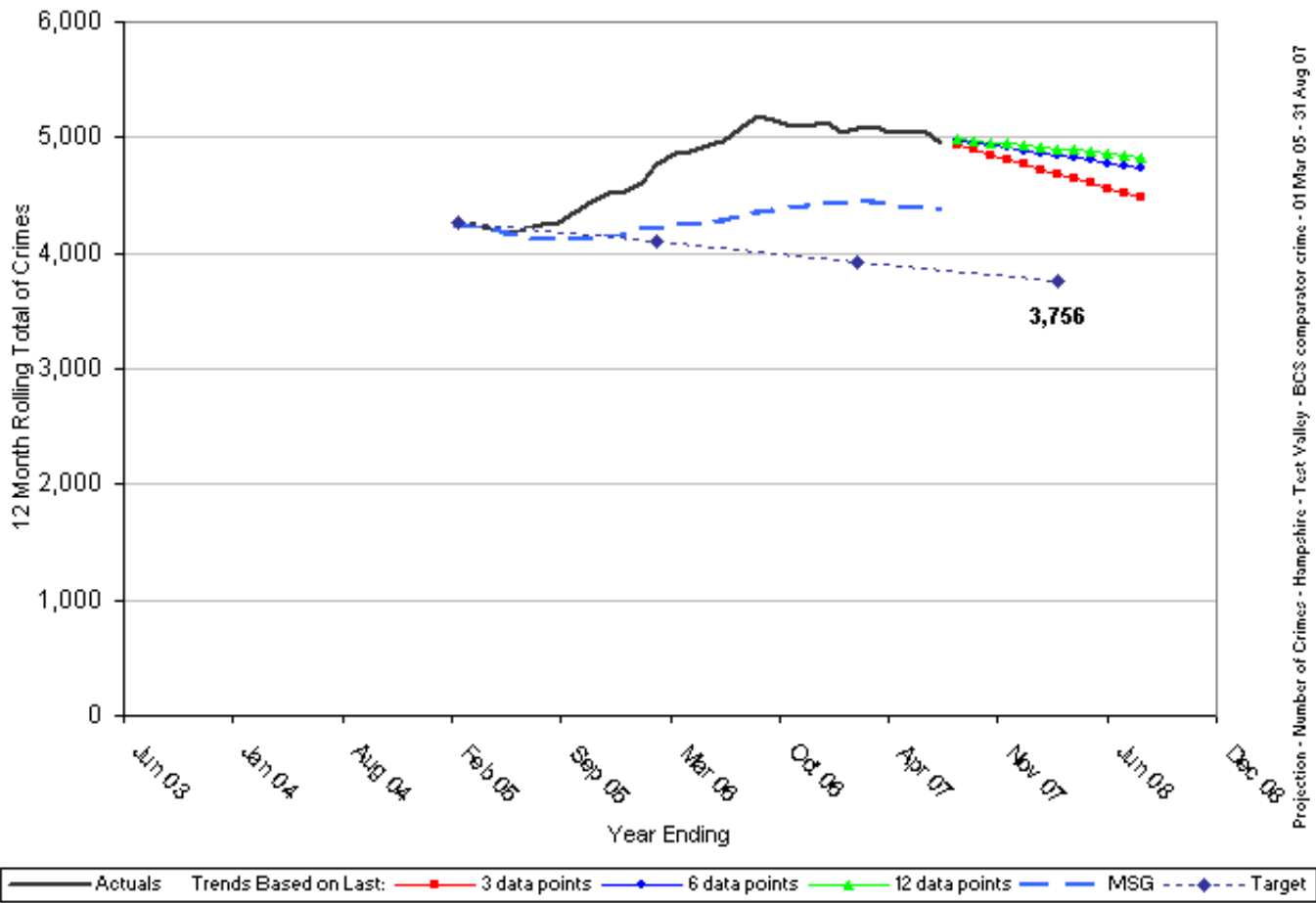
**Barchart - Crimes per 1000 Residents
Hampshire - Test Valley
BCS comparator crime
'Most Similar' CDRPs
01 Jun 2007 - 31 Aug 2007**



Crimes Per 1000 Residents - BCS comparator crime - 01 Jun 2007 - 31 Aug 2007

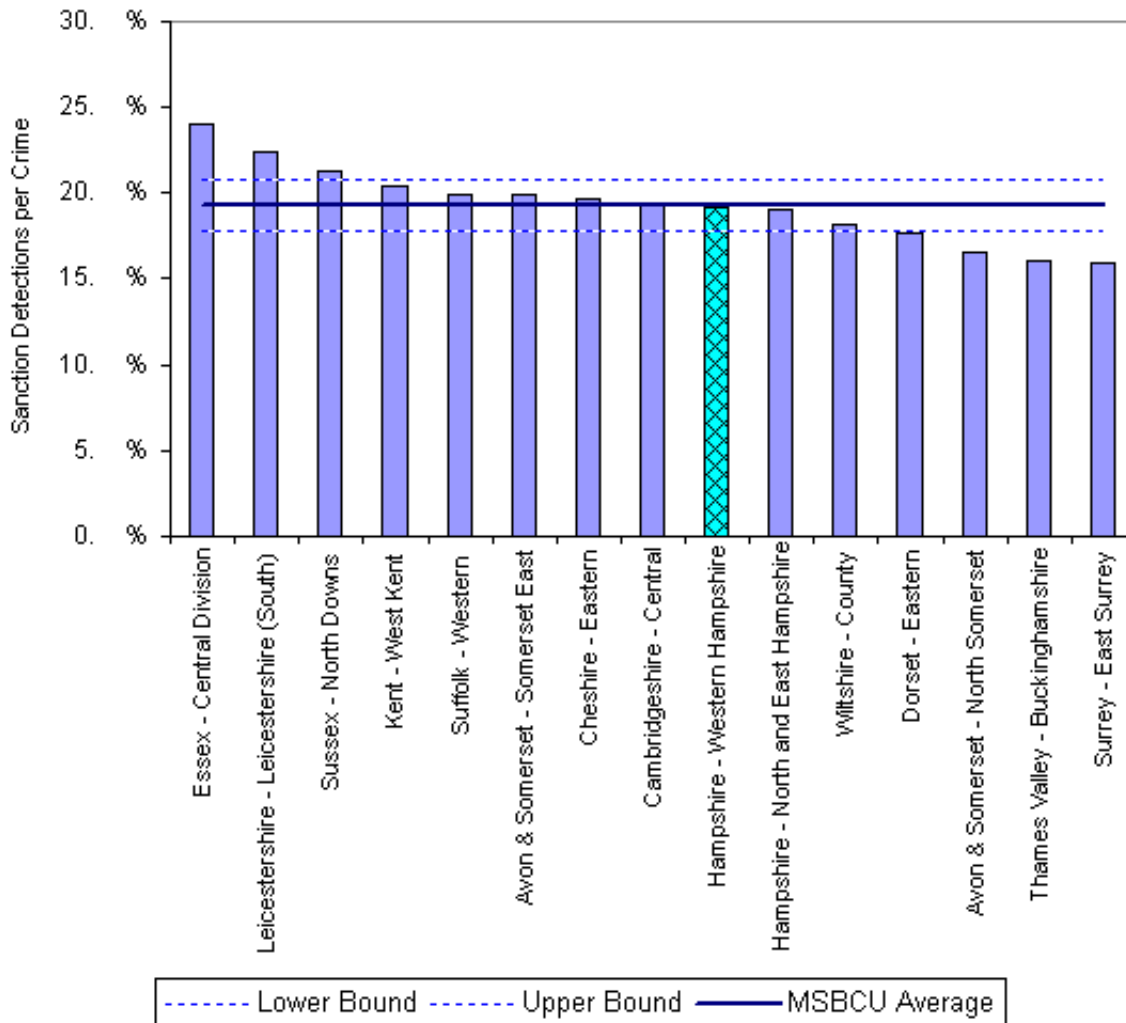
CDRP	Crimes Per 1000 Residents
Wiltshire - North Wiltshire	6.522
Essex - Maldon	6.635
Thames Valley - West Oxfordshire	7.298
Hampshire - East Hampshire	7.468
Sussex - Mid Sussex	7.534
North Yorkshire - Selby	7.795
Suffolk - Babergh	7.866
Leicestershire - Melton	8.773
Thames Valley - Aylesbury Vale	8.990
Thames Valley - South Oxfordshire	9.053
Lincolnshire - South Kesteven	9.381
Cambridgeshire - Huntingdonshire	9.462
Hampshire - Test Valley	10.835
Thames Valley - West Berkshire	12.205
Hampshire - Basingstoke & Deane	14.249
Hampshire - Test Valley Family Avg	9.251

**Projection - Number of Crimes
Hampshire - Test Valley
BCS comparator crime
01 Mar 05 - 31 Aug 07**



Projection - Number of Crimes - Hampshire - Test Valley - BCS comparator crime - 01 Mar 05 - 31 Aug 07

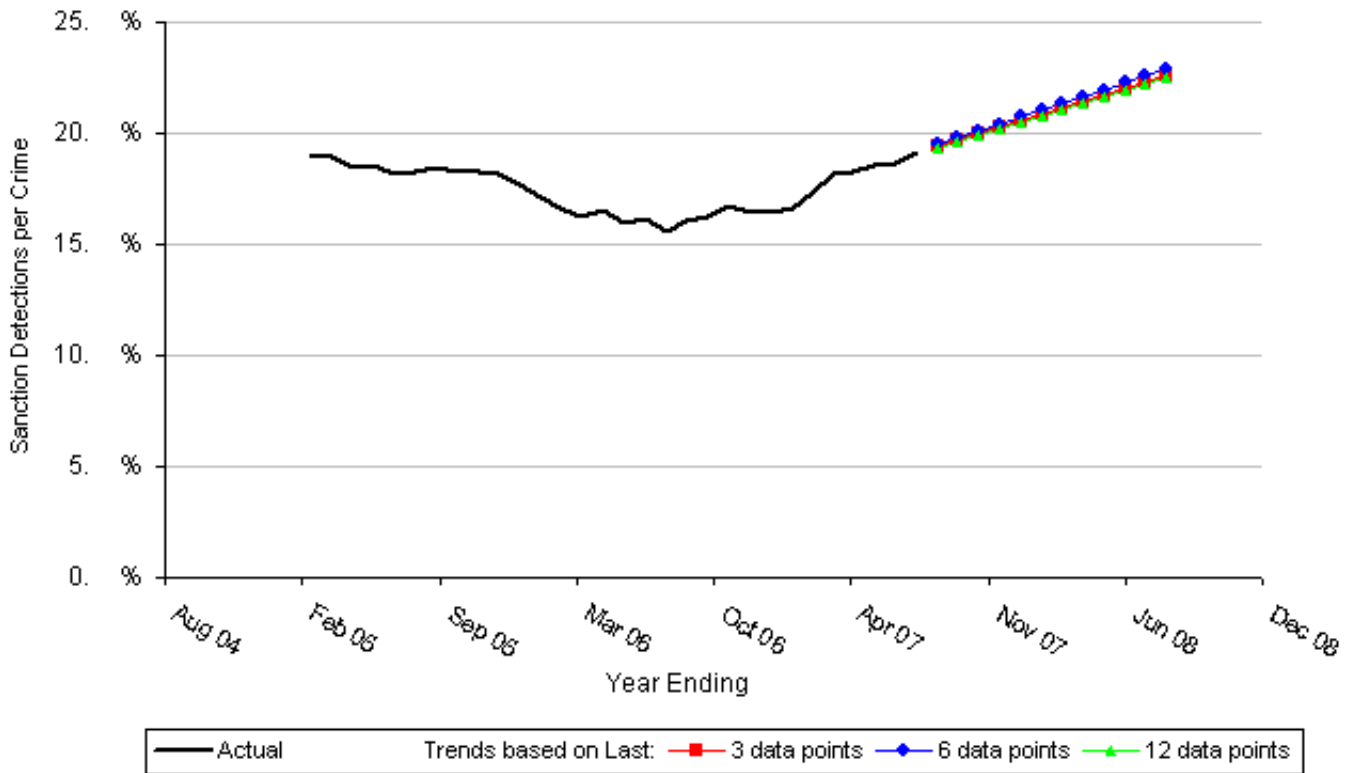
**Barchart - Sanction Detections per Crime
Hampshire - Western Hampshire
BCS comparator crime
'Most Similar' BCUs
01 Sep 2006 - 31 Aug 2007**



Sanction Detections per Crime - BCS comparator crime - 01 Sep 2006 - 31 Aug 2007

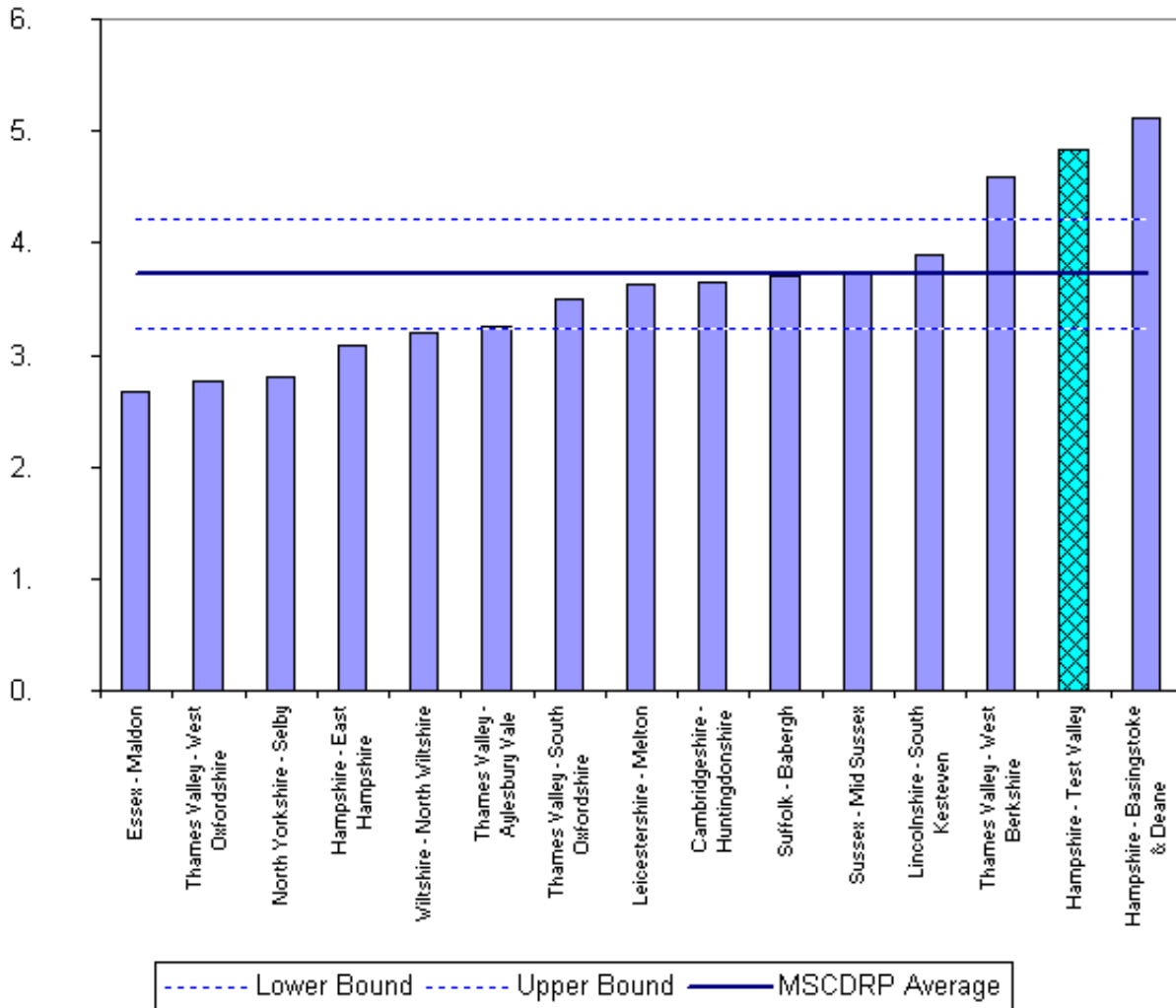
BCU	Sanction Detections per Crime
Essex - Central Division	24.04%
Leicestershire - Leicestershire (South)	22.39%
Sussex - North Downs	21.24%
Kent - West Kent	20.42%
Suffolk - Western	19.93%
Avon & Somerset - Somerset East	19.87%
Cheshire - Eastern	19.65%
Cambridgeshire - Central	19.38%
Hampshire - Western Hampshire	19.17%
Hampshire - North and East Hampshire	19.10%
Wiltshire - County	18.21%
Dorset - Eastern	17.63%
Avon & Somerset - North Somerset	16.59%
Thames Valley - Buckinghamshire	16.10%
Surrey - East Surrey	15.99%
Hampshire - Western Hampshire Family Avg	19.29%

**Projection - Sanction Detections per Crime
Hampshire - Western Hampshire BCU
BCS comparator crime
01 Mar 05 - 31 Aug 07**



Projection - Sanction Detections per Crime-Hampshire - Western Hampshire BCU-BCS comparator crime-01 Mar 05 - 31 Aug 07

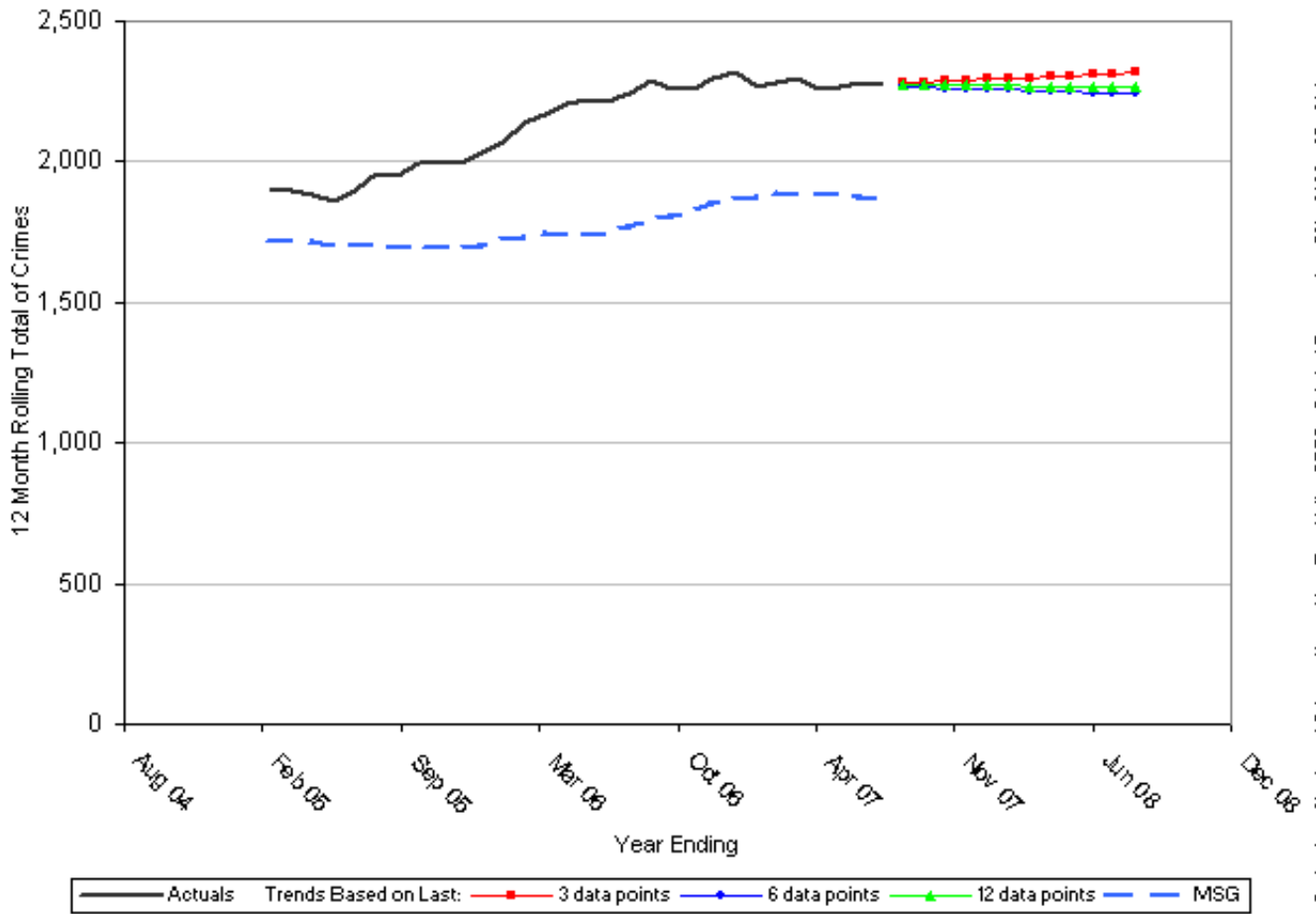
**Barchart - Crimes per 1000 Residents
Hampshire - Test Valley
Criminal Damage (exc 59)
'Most Similar' CDRPs
01 Jun 2007 - 31 Aug 2007**



Crimes Per 1000 Residents - Criminal Damage (exc 59) - 01 Jun 2007 - 31 Aug 2007

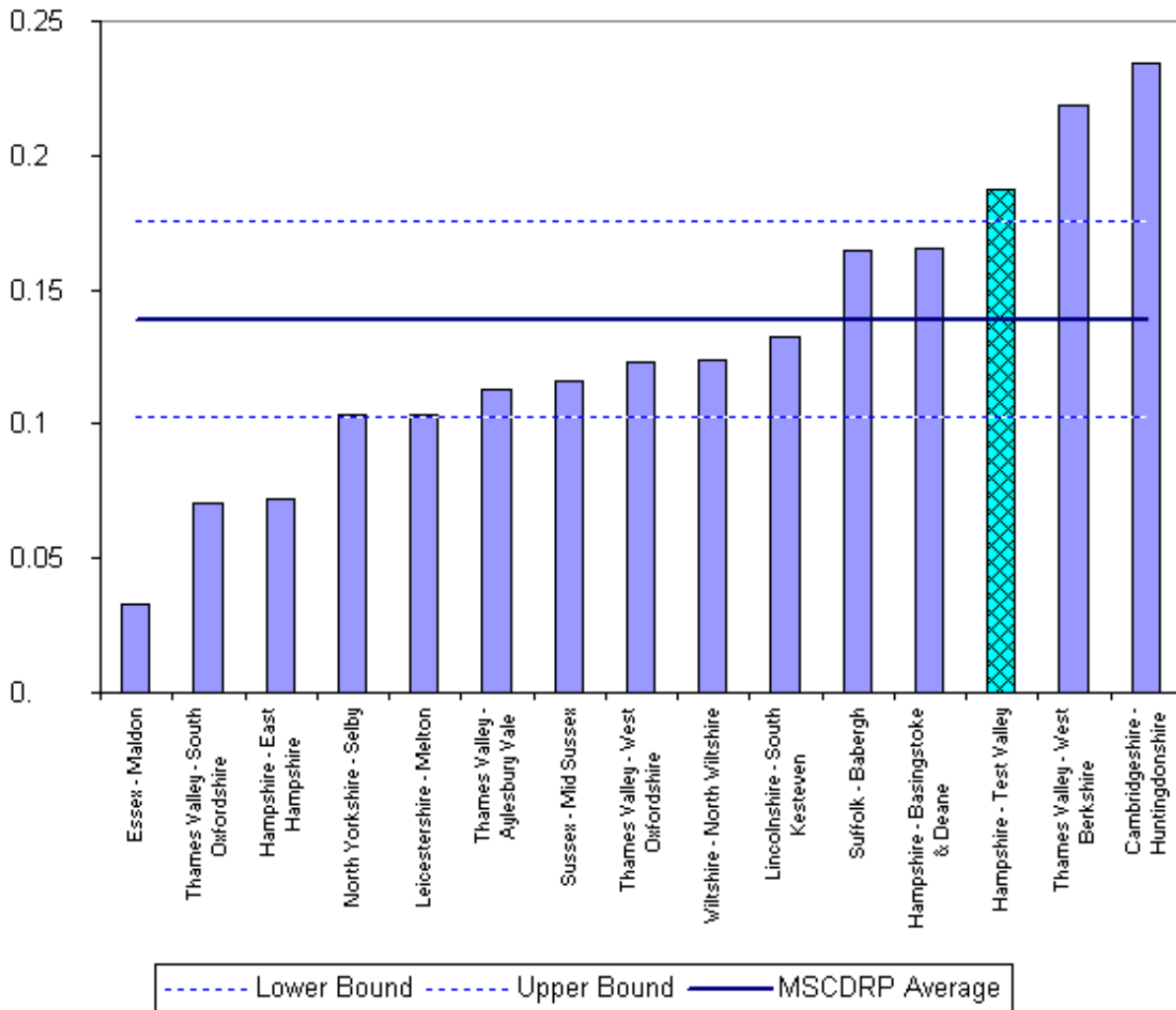
CDRP	Crimes Per 1000 Residents
Essex - Maldon	2.667
Thames Valley - West Oxfordshire	2.774
North Yorkshire - Selby	2.796
Hampshire - East Hampshire	3.091
Wiltshire - North Wiltshire	3.191
Thames Valley - Aylesbury Vale	3.254
Thames Valley - South Oxfordshire	3.493
Leicestershire - Melton	3.621
Cambridgeshire - Huntingdonshire	3.654
Suffolk - Babergh	3.704
Sussex - Mid Sussex	3.728
Lincolnshire - South Kesteven	3.900
Thames Valley - West Berkshire	4.585
Hampshire - Test Valley	4.834
Hampshire - Basingstoke & Deane	5.117
Hampshire - Test Valley Family Avg	3.723

Projection - Number of Crimes Hampshire - Test Valley CDRP Criminal Damage (exc 59) 01 Mar 05 - 31 Aug 07



Projection - Number of Crimes - Hampshire - Test Valley CDRP - Criminal Damage (exc 59) - 01 Mar 05 - 31 Aug

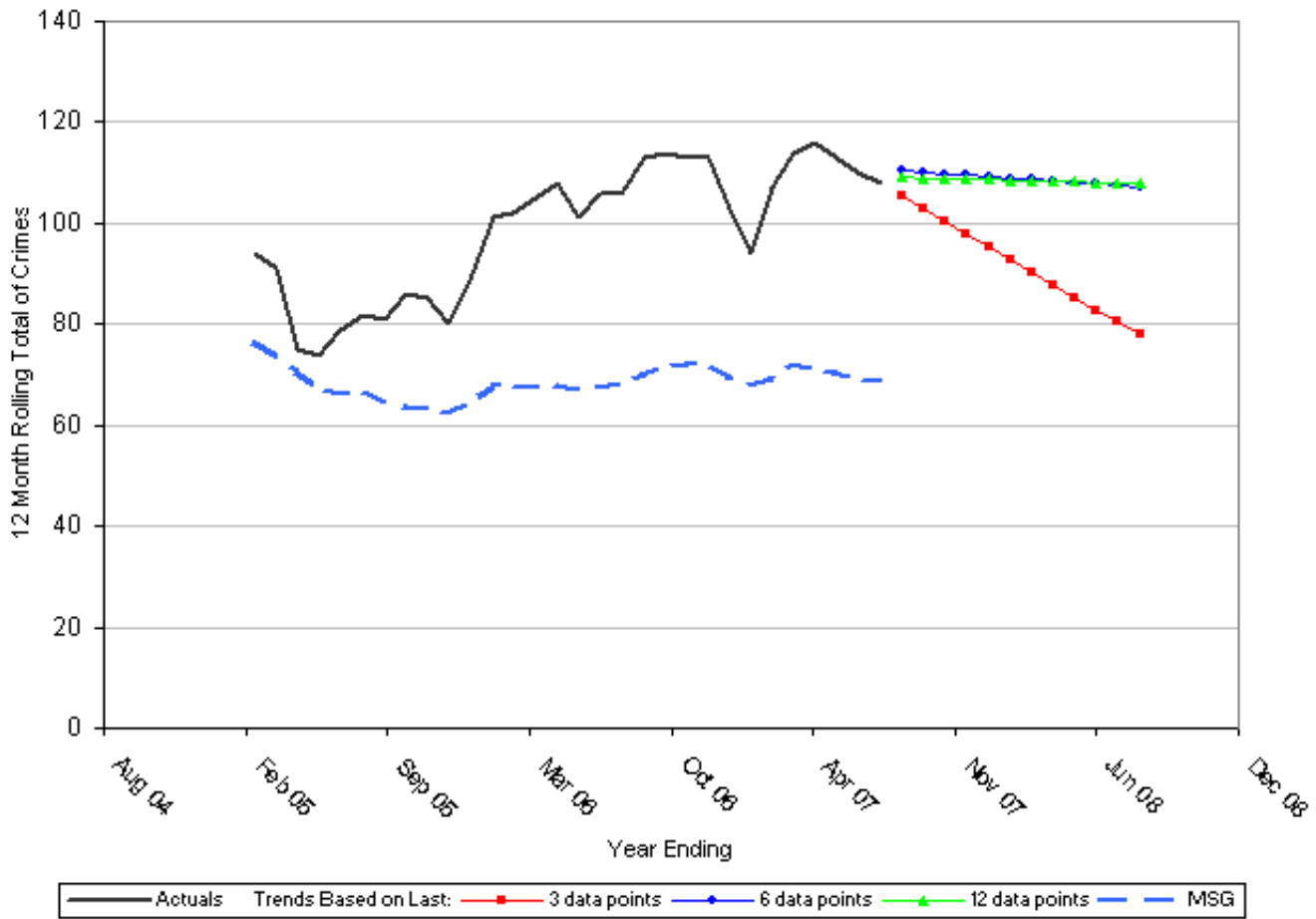
**Barchart - Crimes per 1000 Residents
Hampshire - Test Valley
Arson
'Most Similar' CDRPs
01 Jun 2007 - 31 Aug 2007**



Crimes Per 1000 Residents - Arson - 01 Jun 2007 - 31 Aug 2007

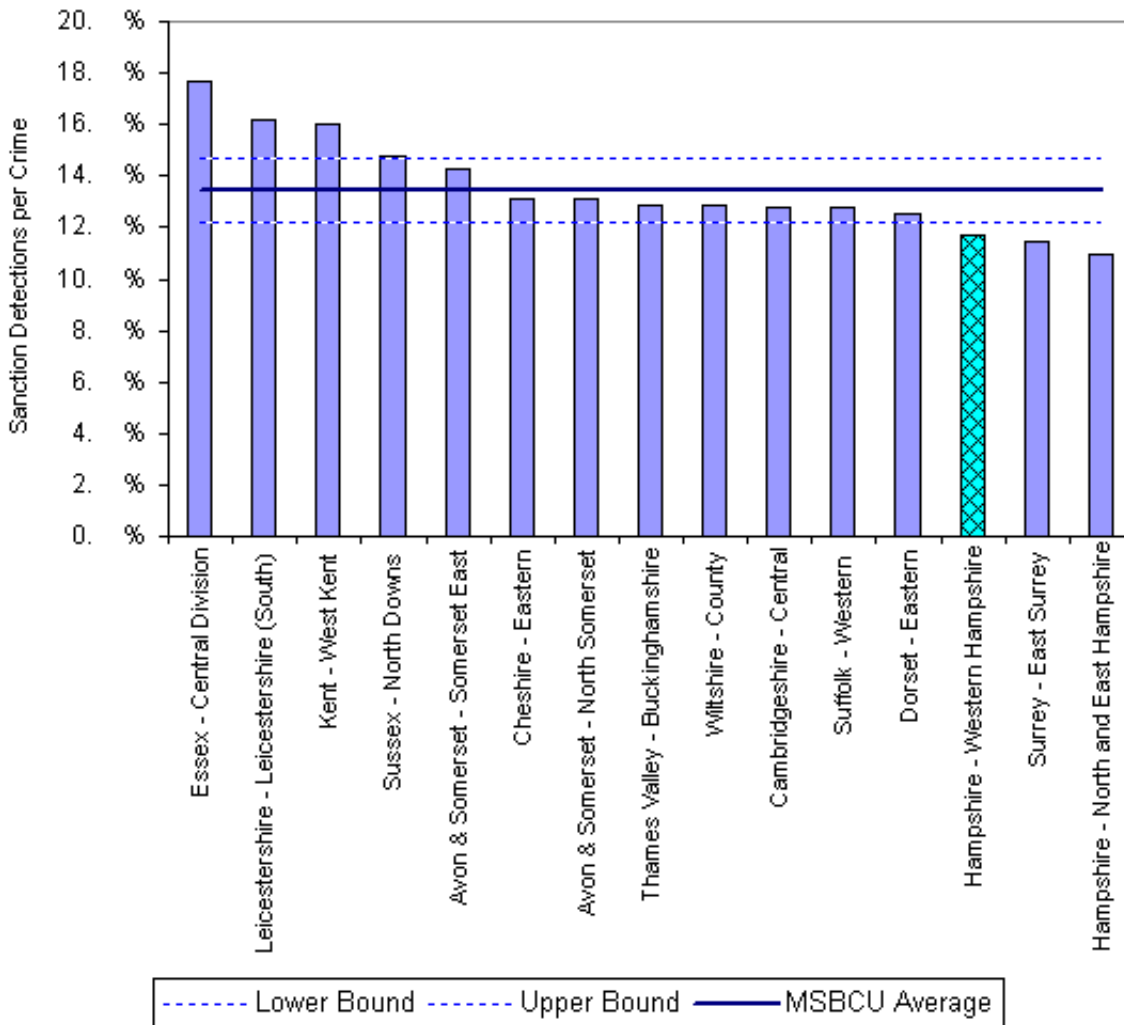
CDRP	Crimes Per 1000 Residents
Essex - Maldon	0.033
Thames Valley - South Oxfordshire	0.070
Hampshire - East Hampshire	0.072
North Yorkshire - Selby	0.103
Leicestershire - Melton	0.103
Thames Valley - Aylesbury Vale	0.113
Sussex - Mid Sussex	0.116
Thames Valley - West Oxfordshire	0.123
Wiltshire - North Wiltshire	0.124
Lincolnshire - South Kesteven	0.132
Suffolk - Babergh	0.165
Hampshire - Basingstoke & Deane	0.166
Hampshire - Test Valley	0.187
Thames Valley - West Berkshire	0.219
Cambridgeshire - Huntingdonshire	0.235
Hampshire - Test Valley Family Avg	0.139

**Projection - Number of Crimes
Hampshire - Test Valley CDRP
Arson
01 Mar 05 - 31 Aug 07**



Projection - Number of Crimes - Hampshire - Test Valley CDRP - Arson - 01 Mar 05 - 31 Aug 07

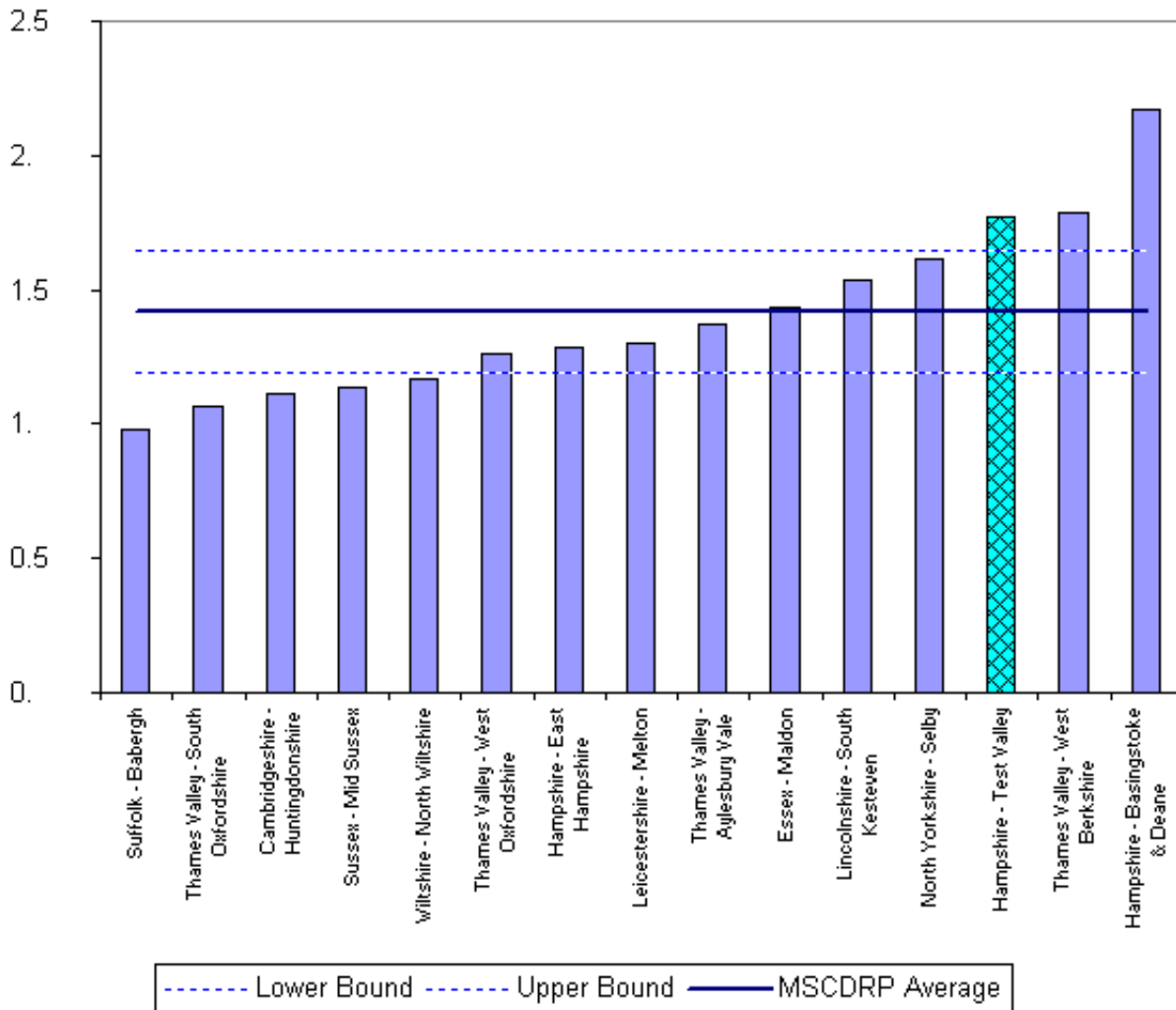
**Barchart - Sanction Detections per Crime
Hampshire - Western Hampshire
Criminal Damage (exc 59)
'Most Similar' BCUs
01 Sep 2006 - 31 Aug 2007**



Sanction Detections per Crime - Criminal Damage (exc 59) - 01 Sep 2006 - 31 Aug 2007

BCU	Sanction Detections per Crime
Essex - Central Division	17.68%
Leicestershire - Leicestershire (South)	16.20%
Kent - West Kent	15.98%
Sussex - North Downs	14.76%
Avon & Somerset - Somerset East	14.24%
Cheshire - Eastern	13.13%
Avon & Somerset - North Somerset	13.10%
Thames Valley - Buckinghamshire	12.89%
Wiltshire - County	12.83%
Cambridgeshire - Central	12.80%
Suffolk - Western	12.75%
Dorset - Eastern	12.56%
Hampshire - Western Hampshire	11.71%
Surrey - East Surrey	11.48%
Hampshire - North and East Hampshire	10.99%
Hampshire - Western Hampshire Family Avg	13.44%

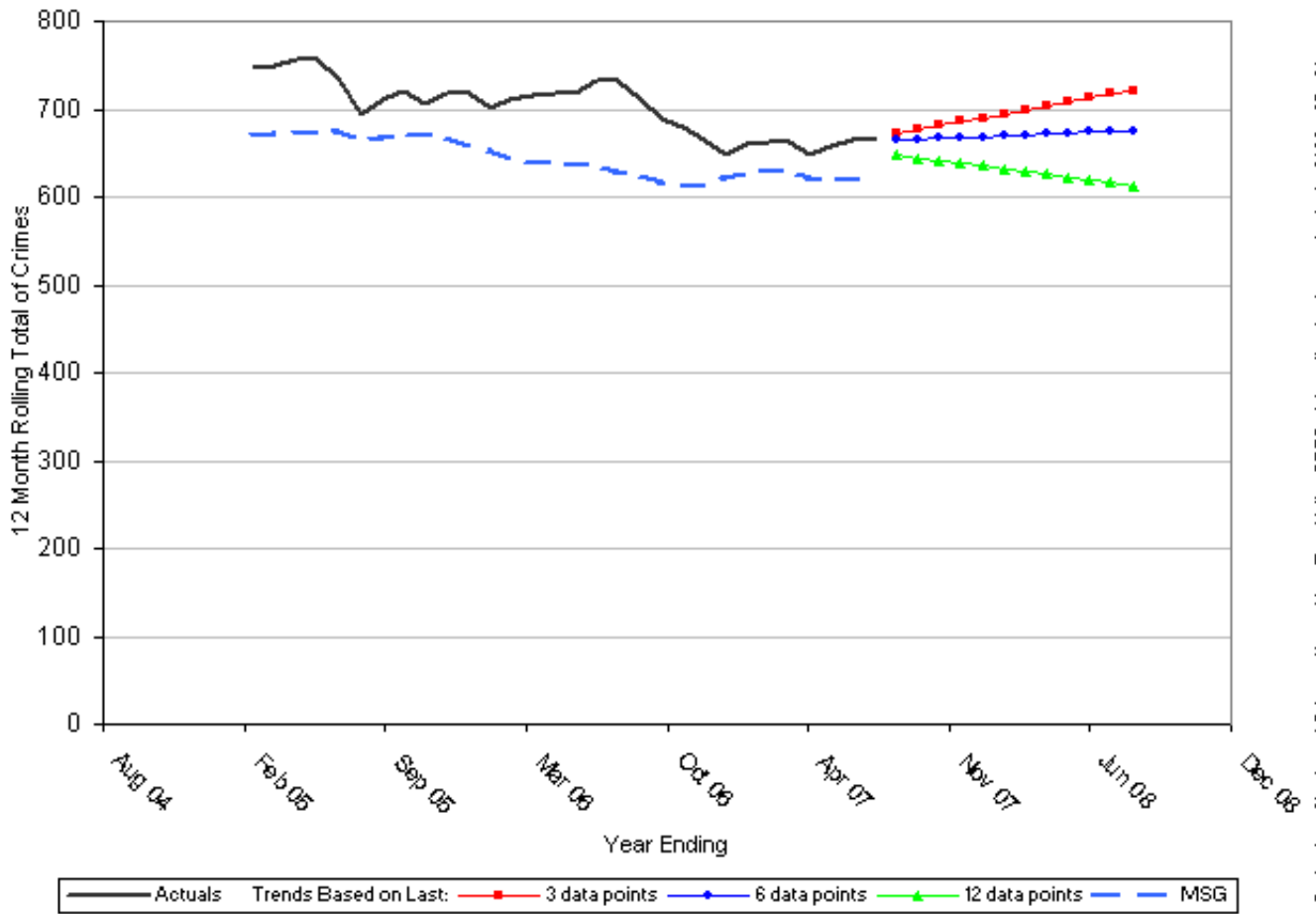
**Barchart - Crimes per 1000 Residents
Hampshire - Test Valley
Wounding (serious and other)
'Most Similar' CDRPs
01 Jun 2007 - 31 Aug 2007**



Crimes Per 1000 Residents - Wounding (serious and other) - 01 Jun 2007 - 31 Aug 2007

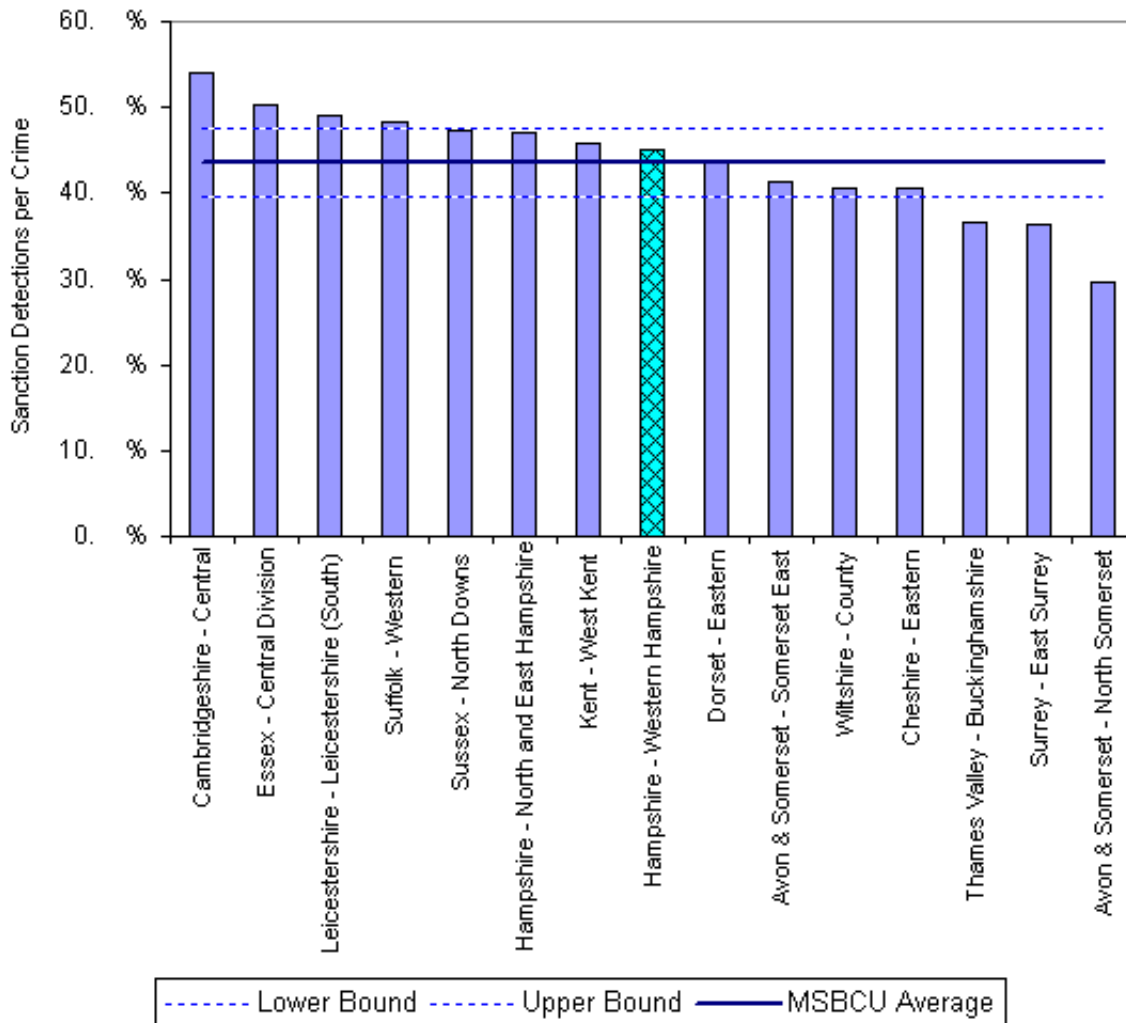
CDRP	Crimes Per 1000 Residents
Suffolk - Babergh	0.976
Thames Valley - South Oxfordshire	1.068
Cambridgeshire - Huntingdonshire	1.111
Sussex - Mid Sussex	1.139
Wiltshire - North Wiltshire	1.167
Thames Valley - West Oxfordshire	1.259
Hampshire - East Hampshire	1.285
Leicestershire - Melton	1.304
Thames Valley - Aylesbury Vale	1.374
Essex - Maldon	1.432
Lincolnshire - South Kesteven	1.534
North Yorkshire - Selby	1.611
Hampshire - Test Valley	1.772
Thames Valley - West Berkshire	1.784
Hampshire - Basingstoke & Deane	2.173
Hampshire - Test Valley Family Avg	1.417

Projection - Number of Crimes Hampshire - Test Valley CDRP Wounding (serious and other) 01 Mar 05 - 31 Aug 07



Projection - Number of Crimes - Hampshire - Test Valley CDRP - Wounding (serious and other) - 01 Mar 05 - 31

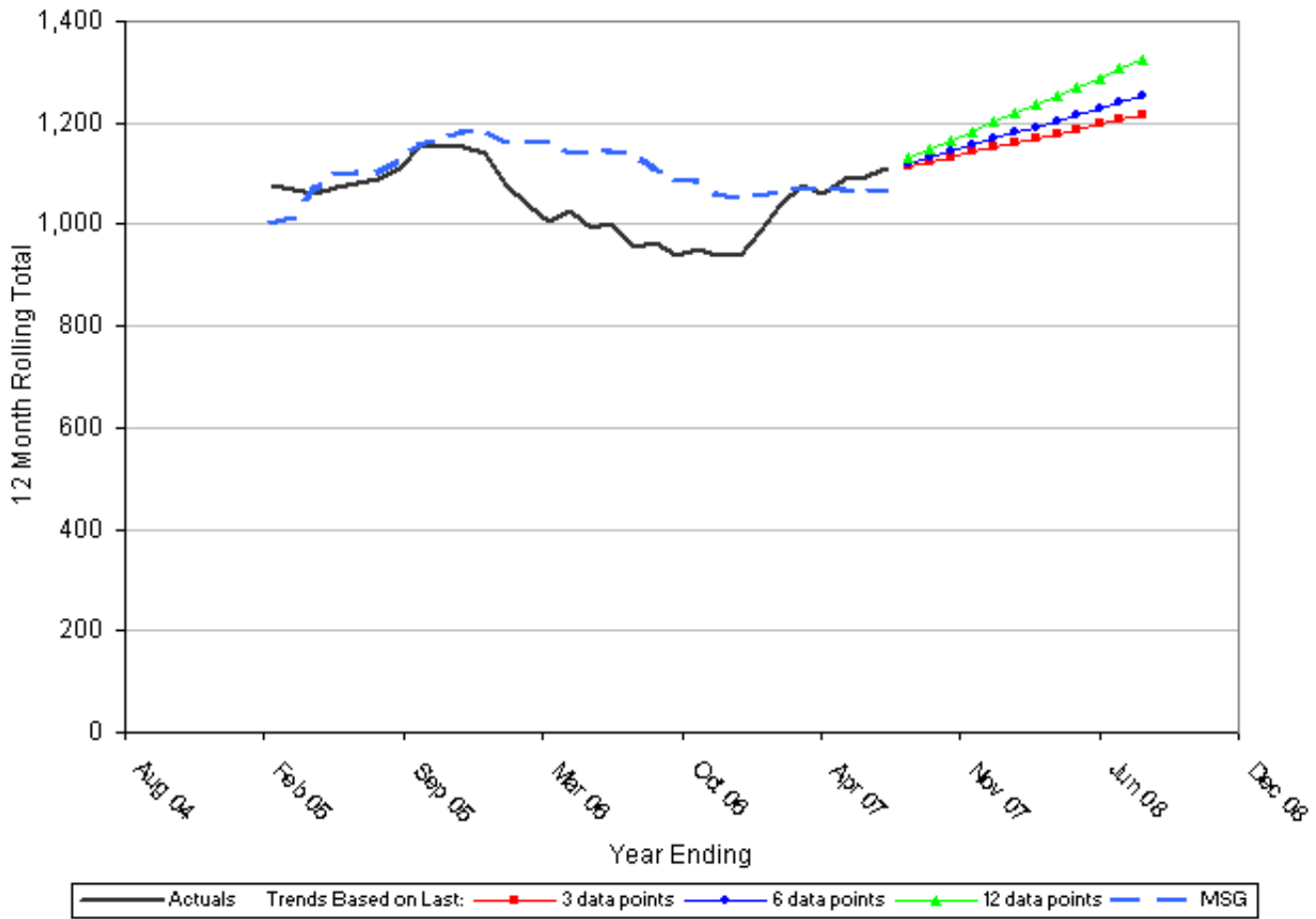
**Barchart - Sanction Detections per Crime
Hampshire - Western Hampshire
Wounding (serious and other)
'Most Similar' BCUs
01 Sep 2006 - 31 Aug 2007**



Sanction Detections per Crime - Wounding (serious and other) - 01 Sep 2006 - 31 Aug 2007

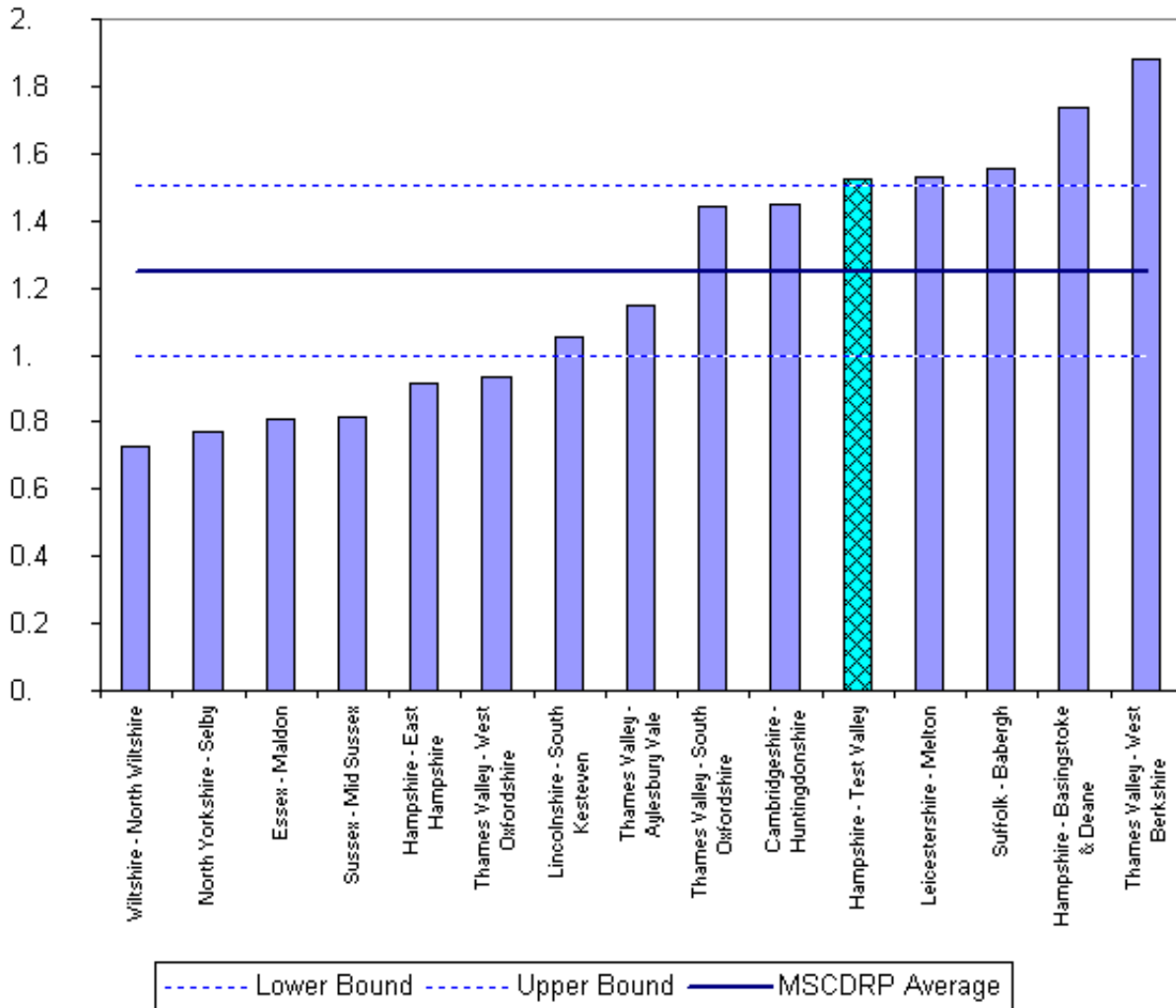
BCU	Sanction Detections per Crime
Cambridgeshire - Central	54.00%
Essex - Central Division	50.24%
Leicestershire - Leicestershire (South)	49.10%
Suffolk - Western	48.23%
Sussex - North Downs	47.26%
Hampshire - North and East Hampshire	47.05%
Kent - West Kent	45.85%
Hampshire - Western Hampshire	45.08%
Dorset - Eastern	43.49%
Avon & Somerset - Somerset East	41.40%
Wiltshire - County	40.54%
Cheshire - Eastern	40.51%
Thames Valley - Buckinghamshire	36.72%
Surrey - East Surrey	36.43%
Avon & Somerset - North Somerset	29.56%
Hampshire - Western Hampshire Family Avg	43.47%

**Projection - Number of Sanction Detections
 Hampshire - Western Hampshire BCU
 Wounding (serious and other)
 01 Mar 05 - 31 Aug 07**



Projection - Number of Sanction Detections - Hampshire - Western Hampshire BCU - Wounding (serious and

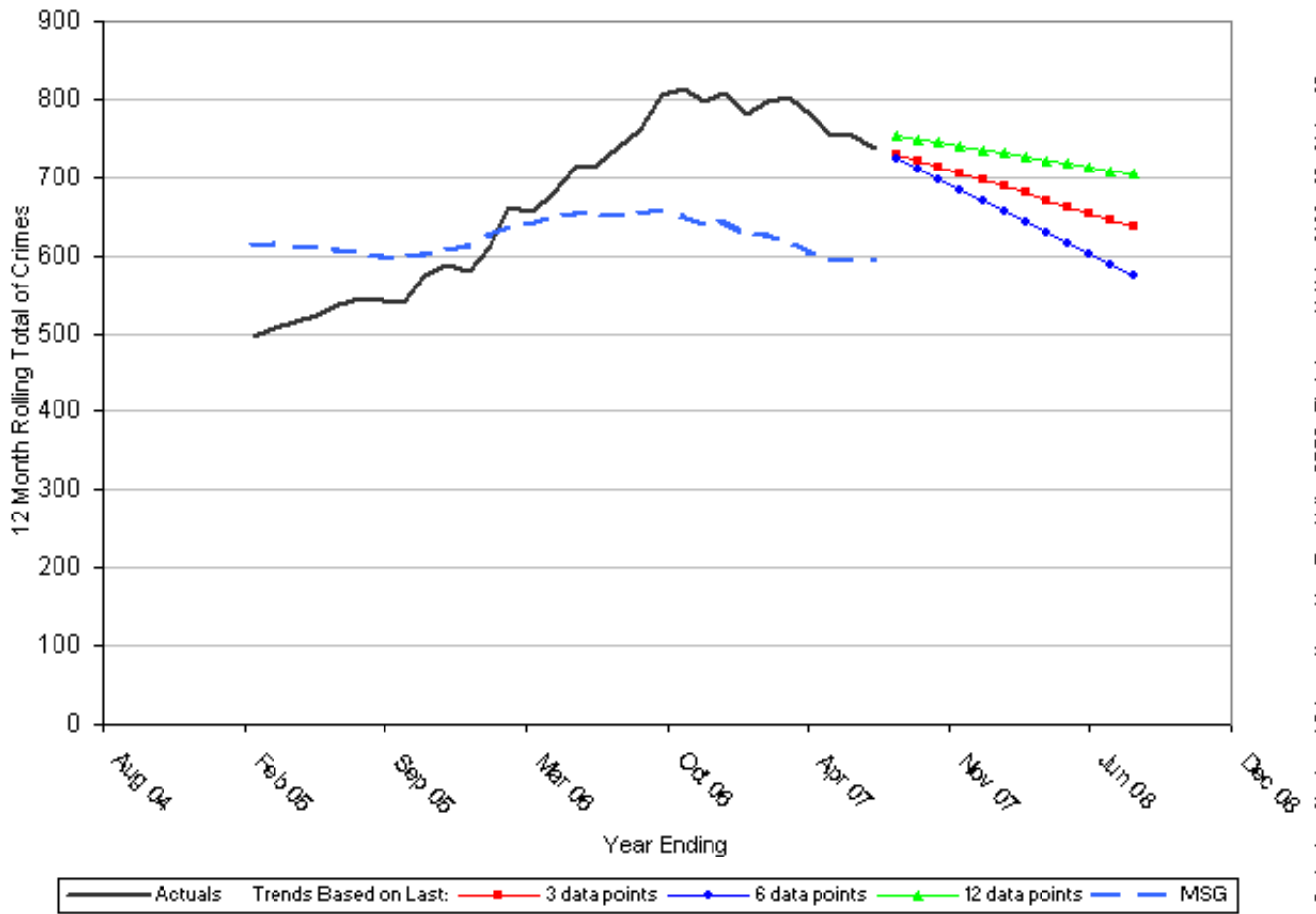
**Barchart - Crimes per 1000 Residents
Hampshire - Test Valley
Theft from a Vehicle
'Most Similar' CDRPs
01 Jun 2007 - 31 Aug 2007**



Crimes Per 1000 Residents - Theft from a Vehicle - 01 Jun 2007 - 31 Aug 2007

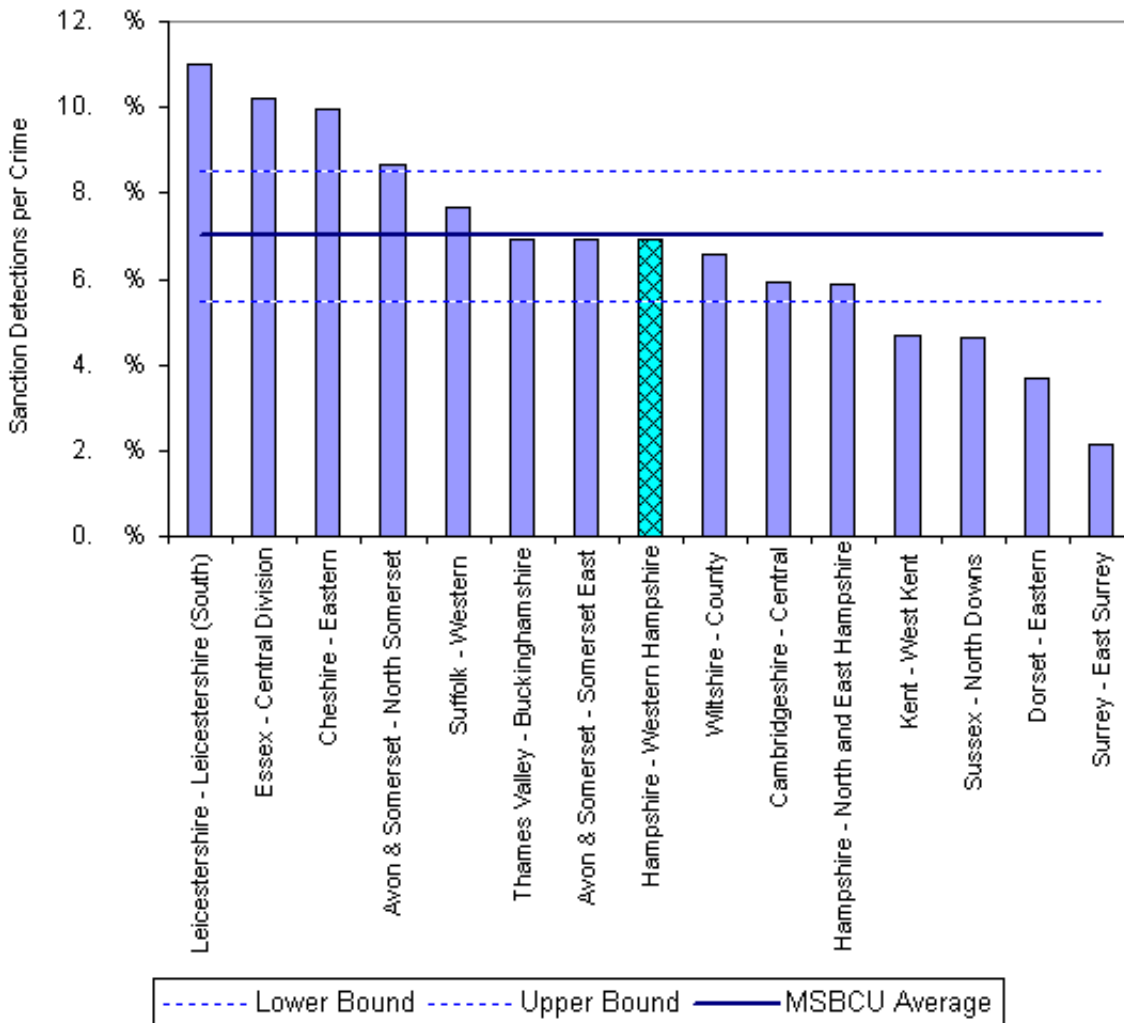
CDRP	Crimes Per 1000 Residents
Wiltshire - North Wiltshire	0.726
North Yorkshire - Selby	0.773
Essex - Maldon	0.807
Sussex - Mid Sussex	0.814
Hampshire - East Hampshire	0.917
Thames Valley - West Oxfordshire	0.931
Lincolnshire - South Kesteven	1.051
Thames Valley - Aylesbury Vale	1.148
Thames Valley - South Oxfordshire	1.443
Cambridgeshire - Huntingdonshire	1.450
Hampshire - Test Valley	1.522
Leicestershire - Melton	1.531
Suffolk - Babergh	1.552
Hampshire - Basingstoke & Deane	1.740
Thames Valley - West Berkshire	1.879
Hampshire - Test Valley Family Avg	1.248

Projection - Number of Crimes Hampshire - Test Valley CDRP Theft from a Vehicle 01 Mar 05 - 31 Aug 07



Projection - Number of Crimes - Hampshire - Test Valley CDRP - Theft from a Vehicle - 01 Mar 05 - 31 Aug 07

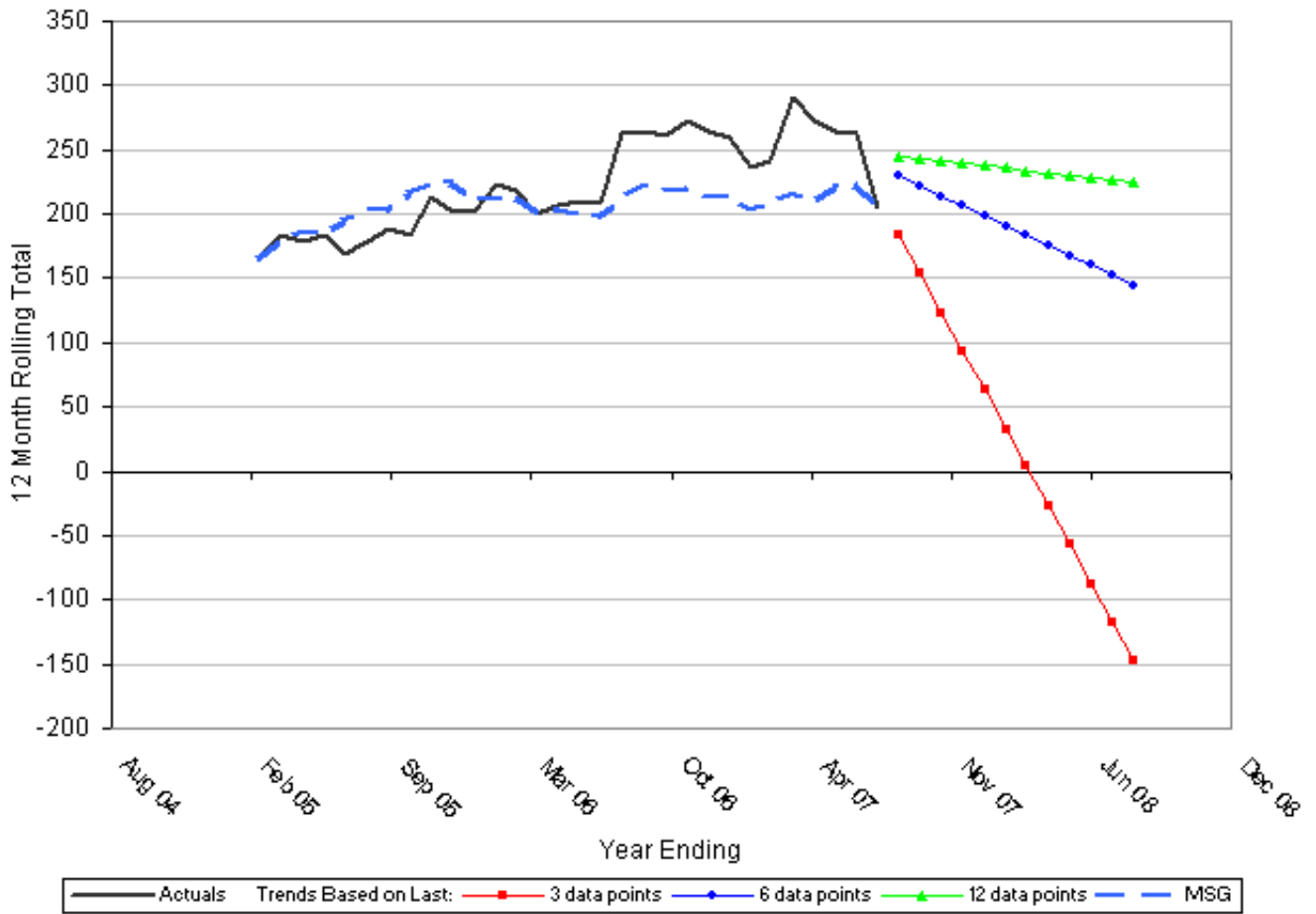
**Barchart - Sanction Detections per Crime
Hampshire - Western Hampshire
Theft from a Vehicle
'Most Similar' BCUs
01 Sep 2006 - 31 Aug 2007**



Sanction Detections per Crime - Theft from a Vehicle - 01 Sep 2006 - 31 Aug 2007

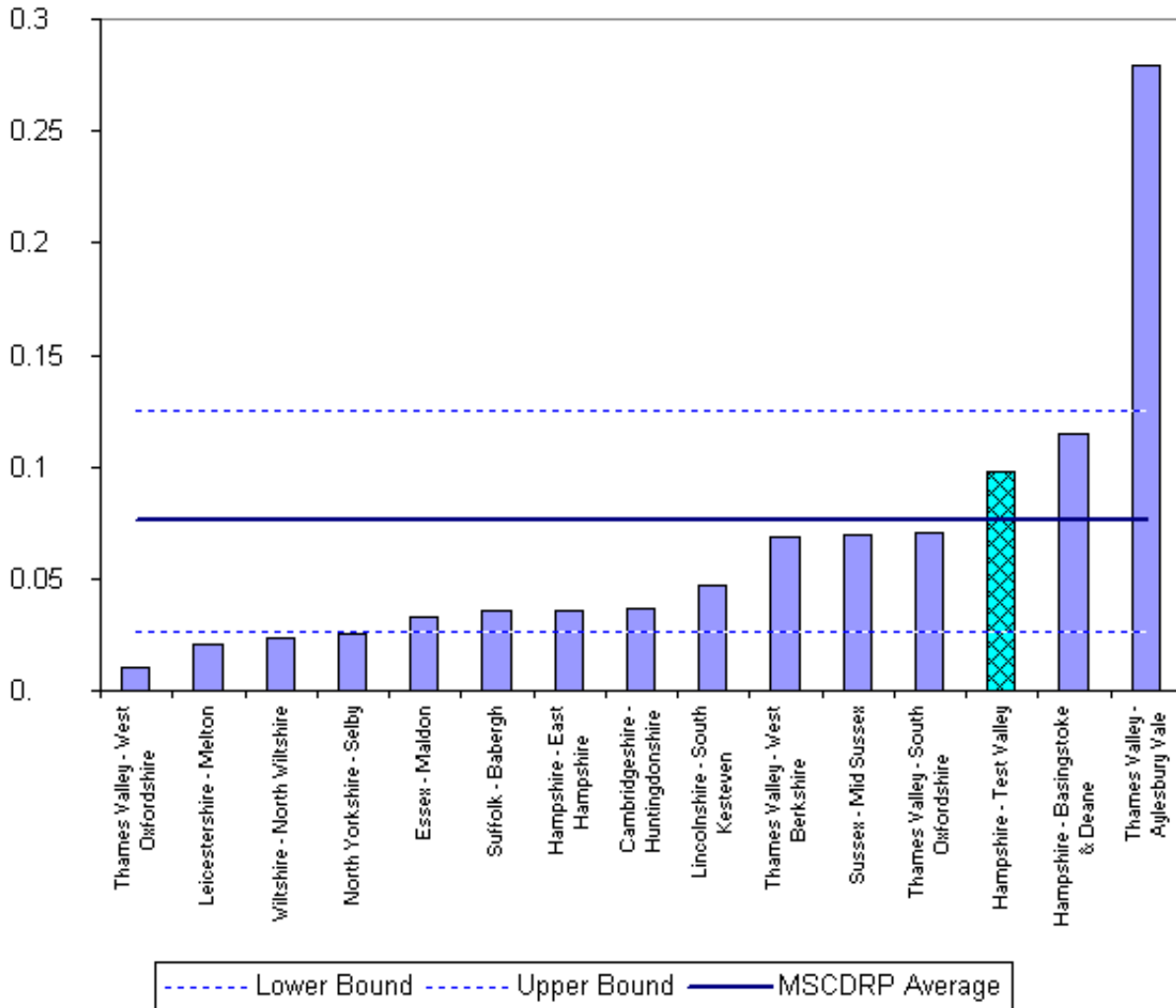
BCU	Sanction Detections per Crime
Leicestershire - Leicestershire (South)	10.99%
Essex - Central Division	10.23%
Cheshire - Eastern	9.95%
Avon & Somerset - North Somerset	8.67%
Suffolk - Western	7.65%
Thames Valley - Buckinghamshire	6.93%
Avon & Somerset - Somerset East	6.90%
Hampshire - Western Hampshire	6.90%
Wiltshire - County	6.57%
Cambridgeshire - Central	5.95%
Hampshire - North and East Hampshire	5.86%
Kent - West Kent	4.70%
Sussex - North Downs	4.64%
Dorset - Eastern	3.70%
Surrey - East Surrey	2.15%
Hampshire - Western Hampshire Family Avg	7.01%

**Projection - Number of Sanction Detections
Hampshire - Western Hampshire BCU
Theft from a Vehicle
01 Mar 05 - 31 Aug 07**



Projection - Number of Sanction Detections - Hampshire - Western Hampshire BCU - Theft from a Vehicle - 01 Mar

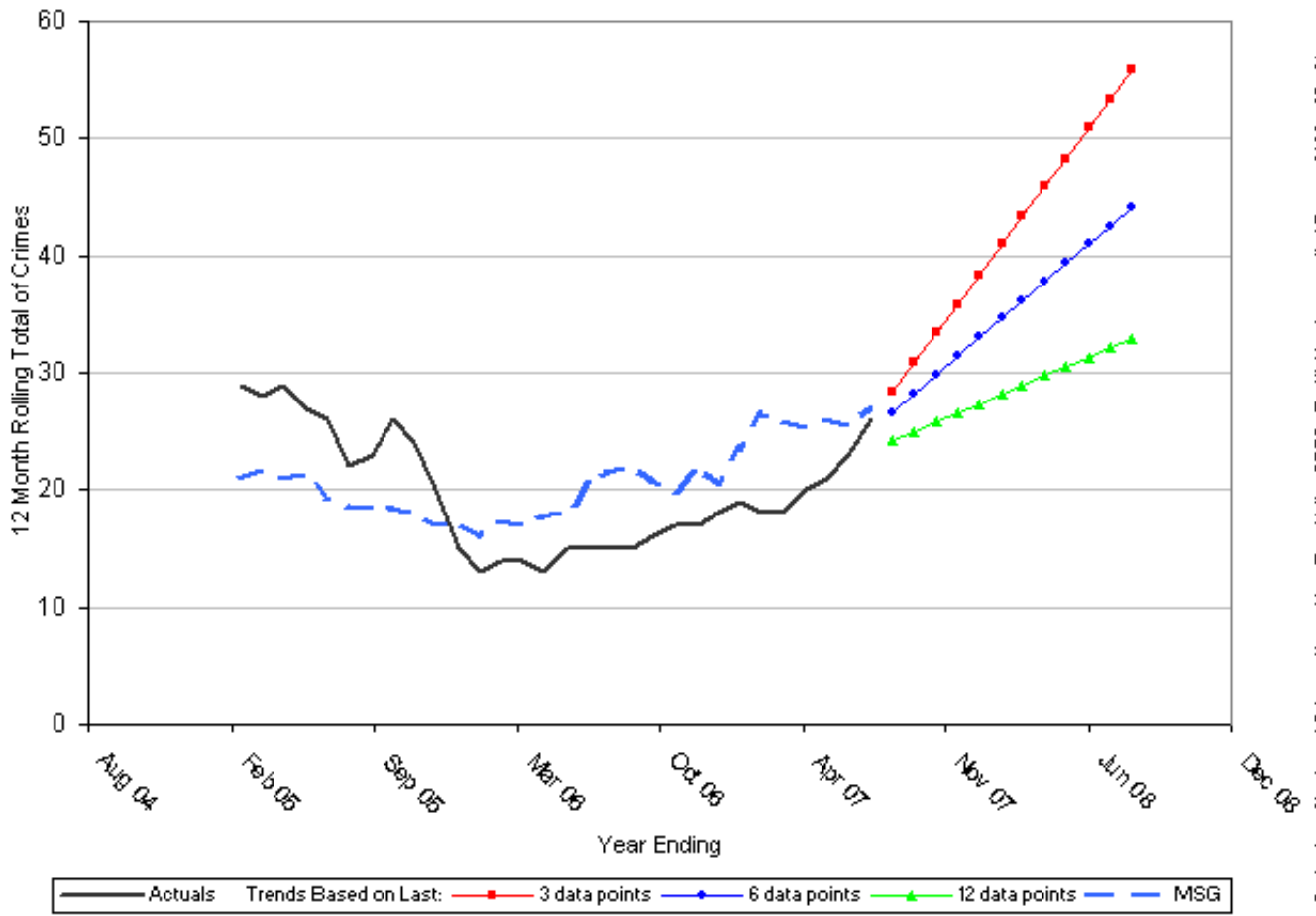
**Barchart - Crimes per 1000 Residents
Hampshire - Test Valley
Trafficking in controlled Drugs
'Most Similar' CDRPs
01 Jun 2007 - 31 Aug 2007**



Crimes Per 1000 Residents - Trafficking in controlled Drugs - 01 Jun 2007 - 31 Aug 2007

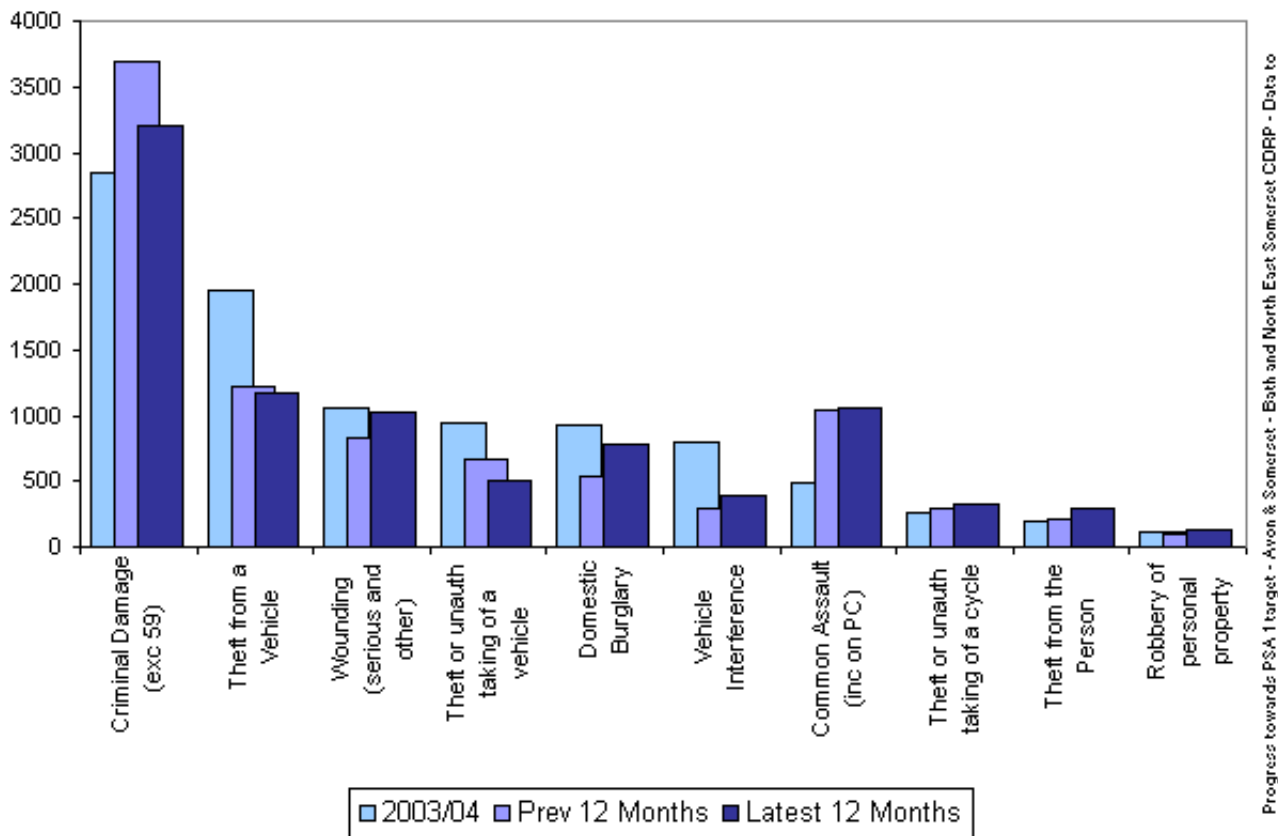
CDRP	Crimes Per 1000 Residents
Thames Valley - West Oxfordshire	0.010
Leicestershire - Melton	0.021
Wiltshire - North Wiltshire	0.023
North Yorkshire - Selby	0.026
Essex - Maldon	0.033
Suffolk - Babergh	0.035
Hampshire - East Hampshire	0.036
Cambridgeshire - Huntingdonshire	0.037
Lincolnshire - South Kesteven	0.047
Thames Valley - West Berkshire	0.068
Sussex - Mid Sussex	0.070
Thames Valley - South Oxfordshire	0.070
Hampshire - Test Valley	0.098
Hampshire - Basingstoke & Deane	0.115
Thames Valley - Aylesbury Vale	0.280
Hampshire - Test Valley Family Avg	0.076

Projection - Number of Crimes Hampshire - Test Valley CDRP Trafficking in controlled Drugs 01 Mar 05 - 31 Aug 07



Projection - Number of Crimes - Hampshire - Test Valley CDRP - Trafficking in controlled Drugs - 01 Mar 05 - 31

**Progress towards PSA 1 target
Avon & Somerset - Bath and North East Somerset CDRP
Data to the end of Aug 07**



Progress towards PSA 1 target - Avon & Somerset - Bath and North East Somerset CDRP - Data to

	Performance				On target?	2007/08 Target
	Baseline 2003/04	Prev 12 months	Latest 12 months	Change from Baseline		
BCS comparator crime	9564	8852	8876	Down 7%	× ×	7,890
Criminal Damage (exc 59)	2840	3697	3201	Up 13%		
Theft from a Vehicle	1945	1217	1172	Down 40%		
Wounding (serious and other)	1057	829	1027	Down 3%		
Theft or unauth taking of a vehicle	948	659	503	Down 47%		
Domestic Burglary	921	531	780	Down 15%		
Vehicle Interference	800	294	395	Down 51%		
Common Assault (inc on PC)	481	1033	1056	Up 120%		
Theft or unauth taking of a cycle	259	290	324	Up 25%		
Theft from the Person	194	206	295	Up 52%		
Robbery of personal property	119	96	123	Up 3%		